

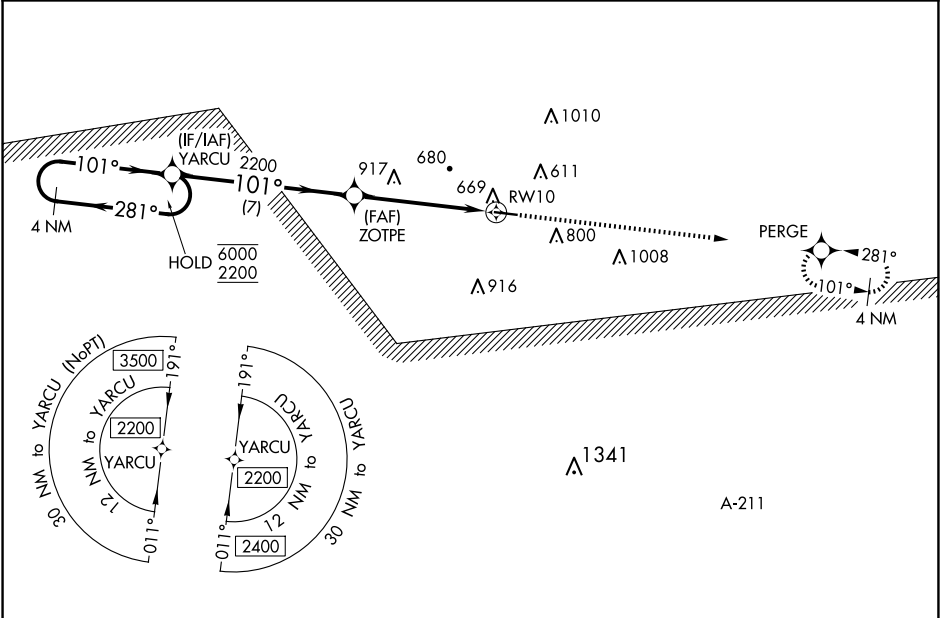


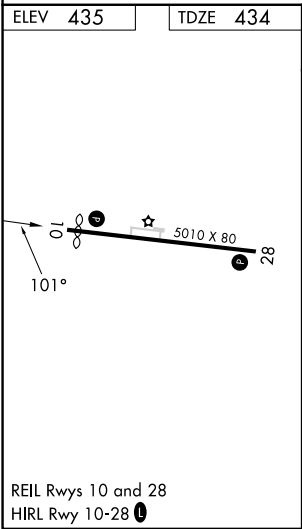
WAAS CH <b>53436</b> <b>W10A</b>	APP CRS <b>101°</b>	Rwy Idg TDZE Apt Elev	<b>4732</b> <b>434</b> <b>435</b>
--	------------------------	-----------------------------	---


RNAV (GPS) RWY 10  
CLAYTON MUNI (11A)




RNP APCH - GPS.		MISSED APPROACH: Climb to 2200 direct PERGE and hold.
 Rwy 10 helicopter visibility reduction below 3/4 SM NA. Baro-VNAV NA.  NA Use Eufaula altimeter setting; when not received, use Troy altimeter setting.		
EUF ASOS <b>128,325</b>	CAIRNS APP CON ★ <b>121.1 319.25</b>	CTAF <b>122.90</b>



ELEV 435	TDZE 434
----------	----------



REIL Rwy 10 and 28  
HIRL Rwy 10-28 

VGSI and RNAV glidepath not coincident (VGSI Angle 3.20/TCH 30).				2200	PERGE
4 NM Holding Pattern YARCU					
6000 ← 281° 2200 ← 101°				2200	
GP 3.00° TCH 40				7 NM	5.5 NM
CATEGORY	A	B	C	D	
LPV DA	781-1 347 (400-1)				
LNAV/VNAV DA	1115-2½ 681 (700-2½)				
LNAV MDA	1180-1 746 (800-1)	1180-1¼ 746 (800-1¼)	1180-2	746 (800-2)	
 CIRCLING	1180-1 745 (800-1)	1180-1¼ 745 (800-1¼)	1180-2¼ 745 (800-2¼)	1300-2¾ 865 (900-2¾)	

SE-4, 10 JUL 2025 to 07 AUG 2025

SE-4, 10 JUL 2025 to 07 AUG 2025