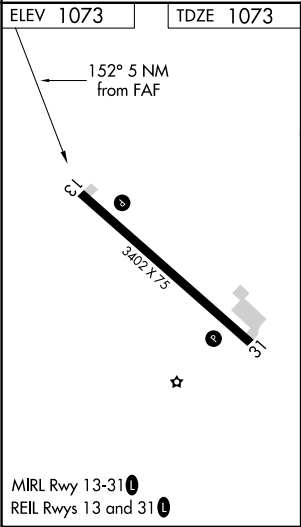
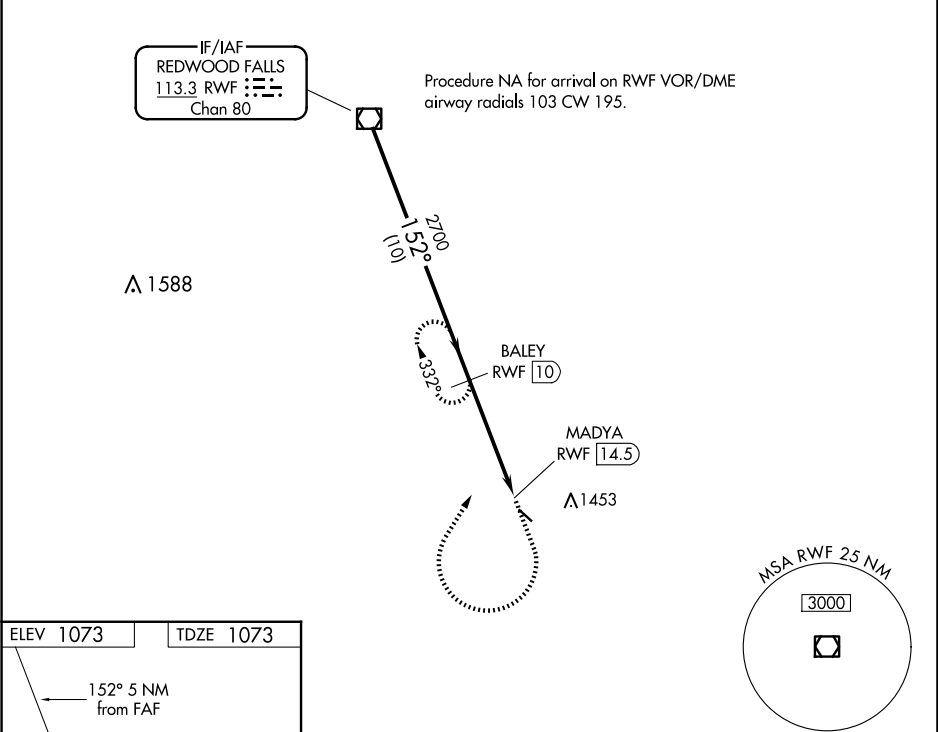


VOR/DME RWF 113.3 Chan 80	APP CRS 152°	Rwy Idg TDZE 1073 Apt Elev 1073	VOR RWY 13 SPRINGFIELD MUNI (D42)
---	------------------------	---	---

DME required.	MISSED APPROACH: Climb to 2000 then climbing right turn to 2700 on heading 030° and RWF R-152 to BAILEY/10 DME and hold.
<div><div>▼</div><div>NA</div></div> Procedure NA at night. Rwy 13 helicopter visibility reduction below 1 SM NA. Use Redwood Falls altimeter setting.	

RWF ASOS 126.575	MINNEAPOLIS CENTER 127.1 290.2	UNICOM 122.8 (CTAF) 0
----------------------------	--	---------------------------------



VGSI and descent angles not coincident (VGSI Angle 3.00/TCH 20).			
RWF VOR/DME	BAILEY RWF 10	RWF R-152	BAILEY RWF 10
2700	2700	3.01° TCH 40	MADYA RWF 14.5
10 NM		4.5 NM	0.5
CATEGORY	A	B	C
S-13	1620-1	547 (600-1)	1620-1¾ 547 (600-1¾)
CIRCLING	1660-1 587 (600-1)	1820-1 747 (800-1)	1820-2¼ 747 (800-2¼)