

APP CRS	Rwy Idg	3402
310°	TDZE	1073
	Apt Elev	1073

RNAV (GPS) RWY 31
SPRINGFIELD MUNI (D42)

RNP APCH.

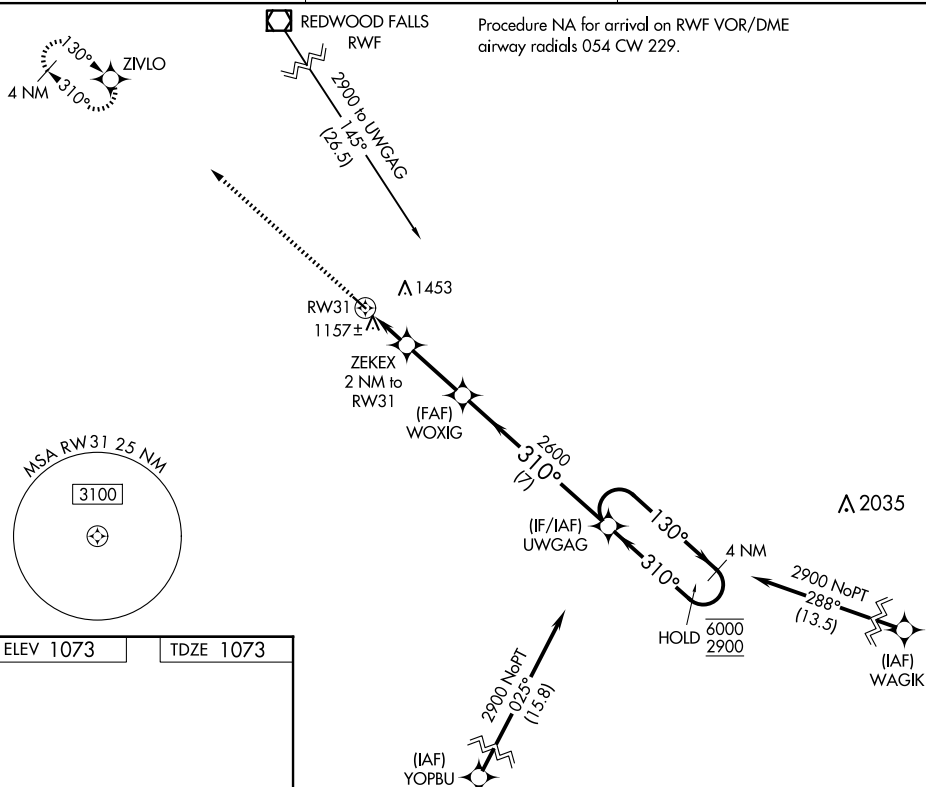


Use Redwood Falls altimeter setting.

MISSED APPROACH: Climb to 2900 direct ZIVLO and hold.

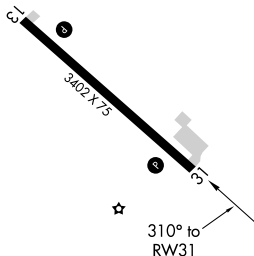
RWF ASOS
126.575

MINNEAPOLIS CENTER
127.1 290.2

UNICOM
122.8 (CTAF) **L**

ELEV 1073

TDZE 1073

M|RL Rwy 13-31 **L**

REIL Rwys 13 and 31 L

ZIVLO

VGSI and descent angles not coincident
(VGSI Angle 3.00/TCH 20).

UWGAG

4 NM Holding Pattern

WGXIG

ZEKEX
2 NM to RW31
 ≤ 3.00
TCH 40

RW31

1740

2600

130° → 6000
← 310° 2900

2 NM 2.7 NM 7 NM

CATEGORY	A	B	C	D
LNAV MDA	1500-1	427 (500-1)	1500-1¼ 427 (500-1¼)	NA
CIRCLING	1660-1 587 (600-1)	1820-1 747 (800-1)	1820-2¼ 747 (800-2¼)	NA

RNAV (GPS) RWY 31