

DANVILLE, KENTUCKY

AL-6504 (FAA)

25163

WAAS CH 70506 W31A	APP CRS 305°	Rwy Ldg 5000 TDZE 1016 Apt Elev 1022
--	------------------------	---

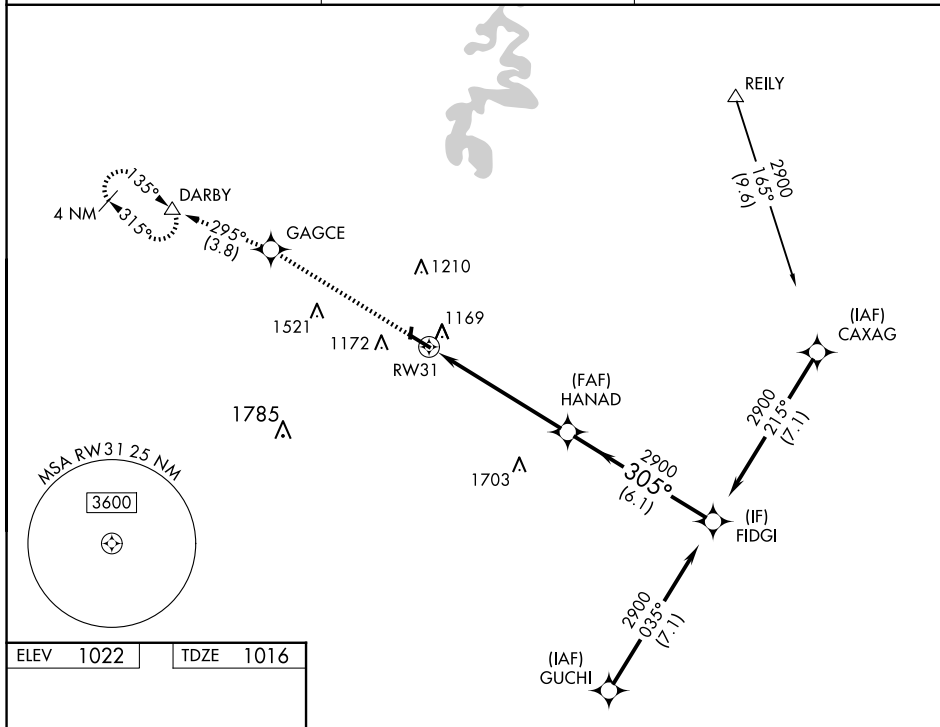
RNAV (GPS) RWY 31
STUART POWELL FLD (DVK)

RNP APCH - GPS.

T For uncompensated Baro-VNAV systems, LNAV/VNAV NA below -17° C
A or above 54° C.

MISSED APPROACH: Climb to 3000 direct GAGCE and on track 295° to DARBY and hold.

AWOS-3 128.325	LEXINGTON APP CON 120.15 259.3	UNICOM 122.8 (CTAF) 0
--------------------------	--	--

[illegible]

DANVILLE, KENTUCKY
Amdt 1 27JAN22

37°35'N-84°46'W

STUART POWELL FLD (DVK)
RNAV (GPS) RWY 31

SE-1, 10 JUL 2025 to 07 AUG 2025

SE-1, 10 JUL 2025 to 07 AUG 2025