

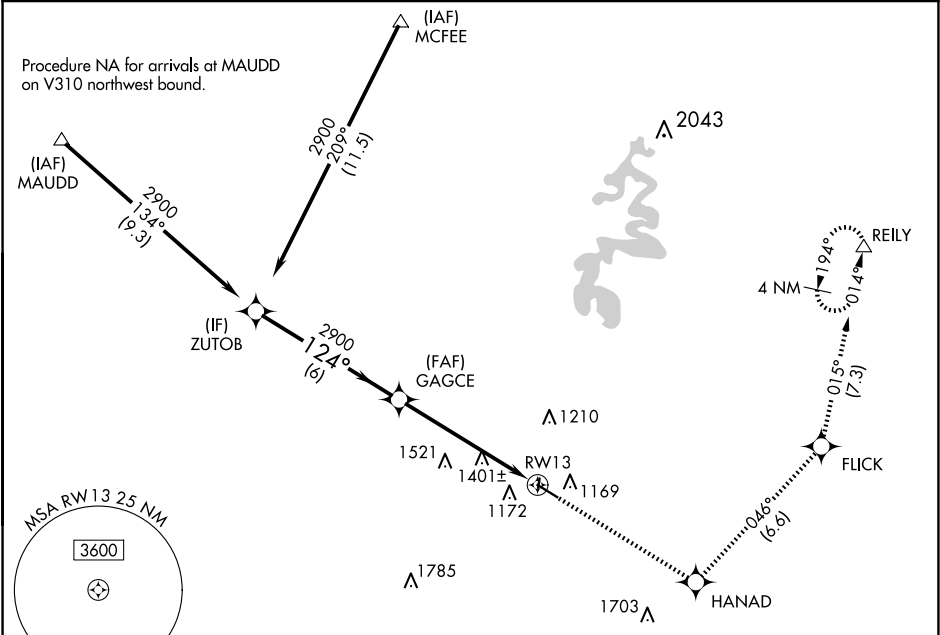
WAAS CH <b>93706</b> <b>W13A</b>	APP CRS <b>124°</b>	Rwy Ldg TDZE <b>1017</b> Apt Elev <b>1022</b>
--	------------------------	---

RNAV (GPS) RWY 13

STUART POWELL FLD (DVK)

RNP APCH - GPS.	MISSED APPROACH: Climb to 3000 direct HANAD and on track 046° to FLICK and on track 015° to REILY and hold.
▼ Rwy 13 helicopter visibility reduction below ¾ SM NA. ▲ For uncompensated Baro-VNAV systems, LNAV/VNAV NA below -17°C or above 54°C.	

AWOS-3 <b>128.325</b>	LEXINGTON APP CON <b>120.15 259.3</b>	UNICOM <b>122.8 (CTAF) 0</b>
--------------------------	--	---------------------------------



		ELEV 1022		TDZE 1017	
		3000 ↑	HANAD ✧	tr 046°	FLICK ✧
				tr 015°	REILY △
CATEGORY		A	B	C	D
LPV DA	1267-1 250 (300-1)				
LNAV/VNAV DA	1660-1¾ 643 (700-1¾)				
LNAV MDA	1660-1 643 (700-1)		1660-1¾ 643 (700-1¾)		

GP 3.00°  
TCH 34

REIL Rwy 31 **L**  
MIRL Rwy 13-31 **L**