

LOC/DME I-PQQ 108.9 Chan 26	APP CRS 305°	Rwy Ldg TDZE Apt Elev 5000 1016 1022
---	------------------------	--

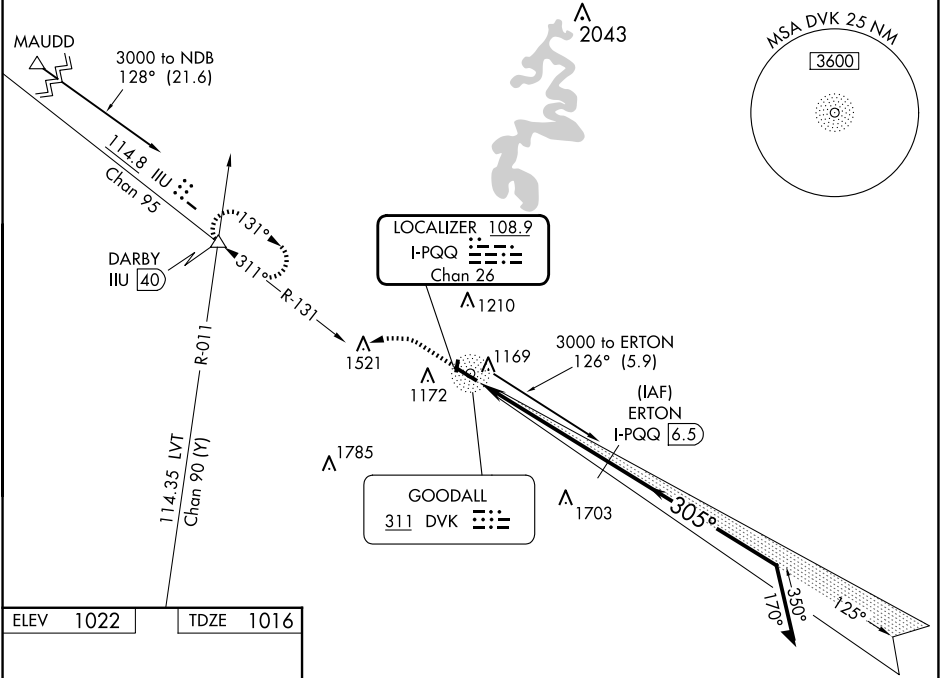
LOC RWY 31
STUART POWELL FLD (DVK)

DME required.
ADF or RADAR required for procedure entry.

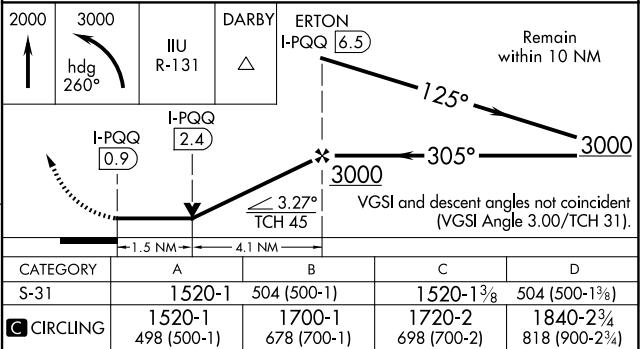
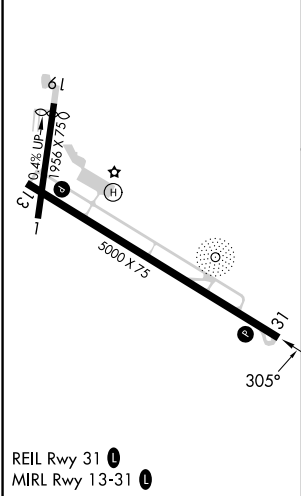
MISSED APPROACH: Climb to 2000 then climbing left turn to 3000 on heading 260° and ILL VORTAC R-131 to DARBY INT and hold.



AWOS-3 128.325	LEXINGTON APP CON 120.15 259.3	UNICOM 122.8 (CTAF)
--------------------------	--	-------------------------------



ELEV 1022	TDZE 1016
-----------	-----------



SE-1, 10 JUL 2025 to 07 AUG 2025

SE-1, 10 JUL 2025 to 07 AUG 2025