

WAAS CH 48819 W03A	APP CRS 032°	Rwy Idg TDZE Apt Elev	5500 147 164
--	------------------------	-----------------------------	---

RNAV (GPS) RWY 3

JOHNSTON RGNL (JNX)

▼

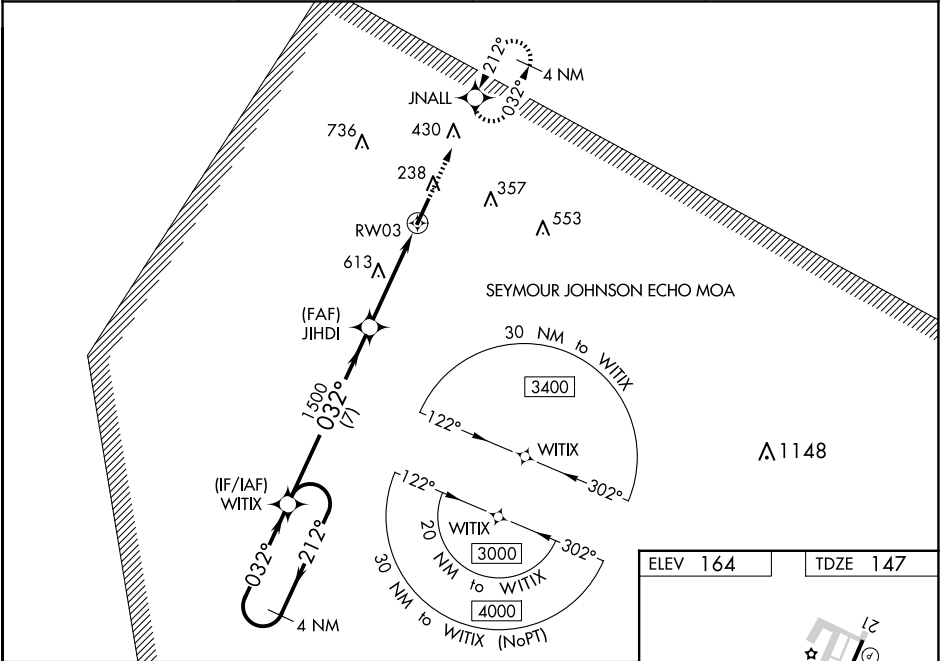
▲

For uncompensated Baro-VNAV systems, LNAV/VNAV NA below -1.5°C (5°F) or above 54°C (130°F). DME/DME RNP-0.3 NA. When local altimeter setting not received, use Erwin altimeter setting and increase LPV DA to 447 feet, LNAV/VNAV DA to 1020 feet, and all LNAV/VNAV visibilities ½ mile. Increase all MDA 60 feet; increase visibility Cat B, C, and D ¼ mile. Baro-VNAV and VDP NA with Erwin altimeter setting. Inop table does not apply to LNAV/VNAV when using Erwin altimeter setting. For inop MALS when using Erwin altimeter setting, increase LPV all Cats visibility to 1 mile and LNAV Cats C/D visibility to 2½ miles.

MALS

MISSED APPROACH:
Climb to 3400 direct JNALL and hold, continue climb-in-hold to 3400.

AWOS-3 120.225	RALEIGH APP CON 125.3 353.675	GCO 135.075	UNICOM 122.725 (CTAF) 0
--------------------------	---	-----------------------	-----------------------------------



4 NM Holding Pattern WITIX					3400	JNALL
3000 ← 212° 032° → 032°					*2.2 NM to RWY 3	
GP 3.00° TCH 45					*LNAV only.	
1500					RWY 3	
7 NM 1.9 NM 2.2 NM						
CATEGORY	A	B	C	D		
LPV DA	397-½				250 (300-½)	
LNAV/VNAV DA	970-2½				823 (900-2½)	
LNAV MDA	880-½		733 (800-½)		880-1⅝ 733 (800-1⅝)	
CIRCLING	880-1		716 (800-1)		920-2¼ 756 (800-2¼) 1100-3 936 (1000-3)	

