

PETERSBURG, WEST VIRGINIA

AL-6500 (FAA)

25107

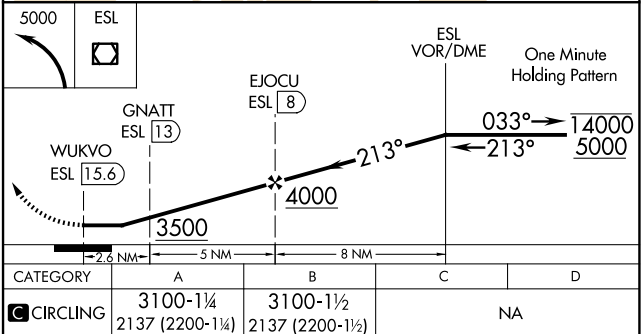
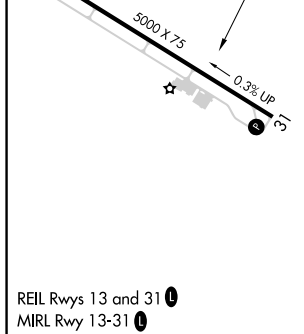
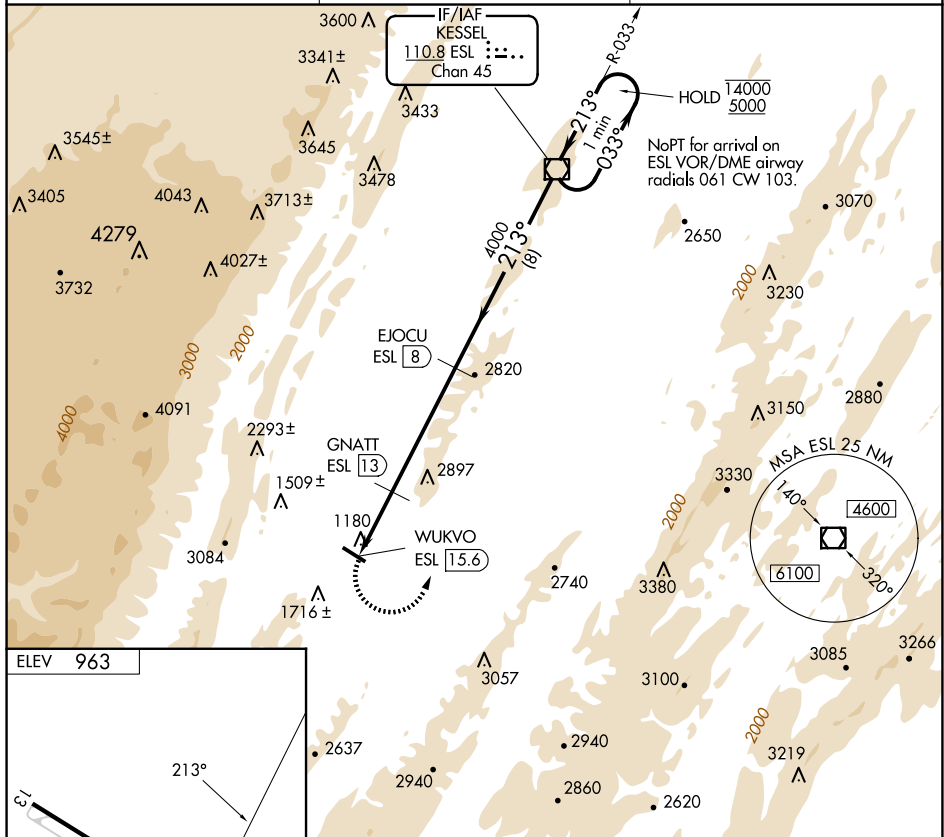
VOR/DME ES 110.8 Chan 45	APP CRS 213°	Rwy Idg TDZE Apt Elev	N/A N/A 963
--	------------------------	-----------------------------	--

VOR/DME-A
GRANT COUNTY (W99)

**T
A
-8°C**

MISSED APPROACH: Climbing left turn to 5000 direct ESL VOR/DME and hold.

AWOS-3 124.475	WASHINGTON CENTER 133.55 322.55	UNICOM 122.8 (CTAF) 0
--------------------------	---	--



PETERSBURG, WEST VIRGINIA
Amdt 2D 15JUN23

39°00'N-79°09'W

GRANT COUNTY (W99)
VOR/DME-A

NE-4, 10 JUL 2025 to 07 AUG 2025

NE-4, 10 JUL 2025 to 07 AUG 2025