

LOC I-YQ

111.5

Chan 52

APP CRS

285°

Rwy Idg

TDZE

Apt Elev

N/A

N/A

963

LDA/DME-B

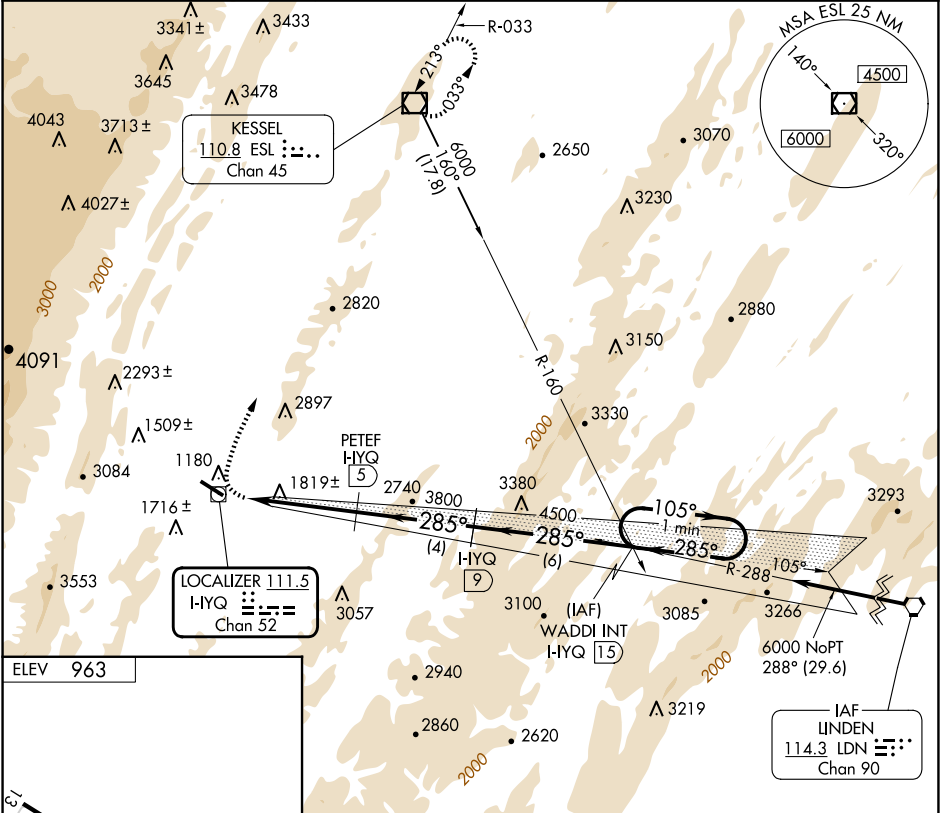
GRANT COUNTY (W99)

NA

-8°C

MISSED APPROACH: Climbing right turn to 5000 direct ESL VOR/DME and hold.

AWOS-3 124.475	WASHINGTON CENTER 133.55 322.55	UNICOM 122.8 (CTAF) 0
-------------------	------------------------------------	--------------------------



ELEV 963

MIRL Rwy 13-31 0
REIL Rwy 13 and 31 0

5000 ESL

WADDI INT I-YQ 15

PETEF I-YQ 5

I-YQ 9

3800

4500

6000

0.9

4 NM

4 NM

6 NM

CATEGORY	A	B	C	D
CIRCLING	2500-1¼ 1537 (1600-1¼)	2500-1½ 1537 (1600-1½)	2880-3 1917 (2000-3)	NA