

APP CRS  
310°

Rwy Idg  
TDZE  
957

5000  
963  
Apt Elev

COPTER RNAV (GPS) X RWY 31

GRANT COUNTY (W99)

RNP APCH.

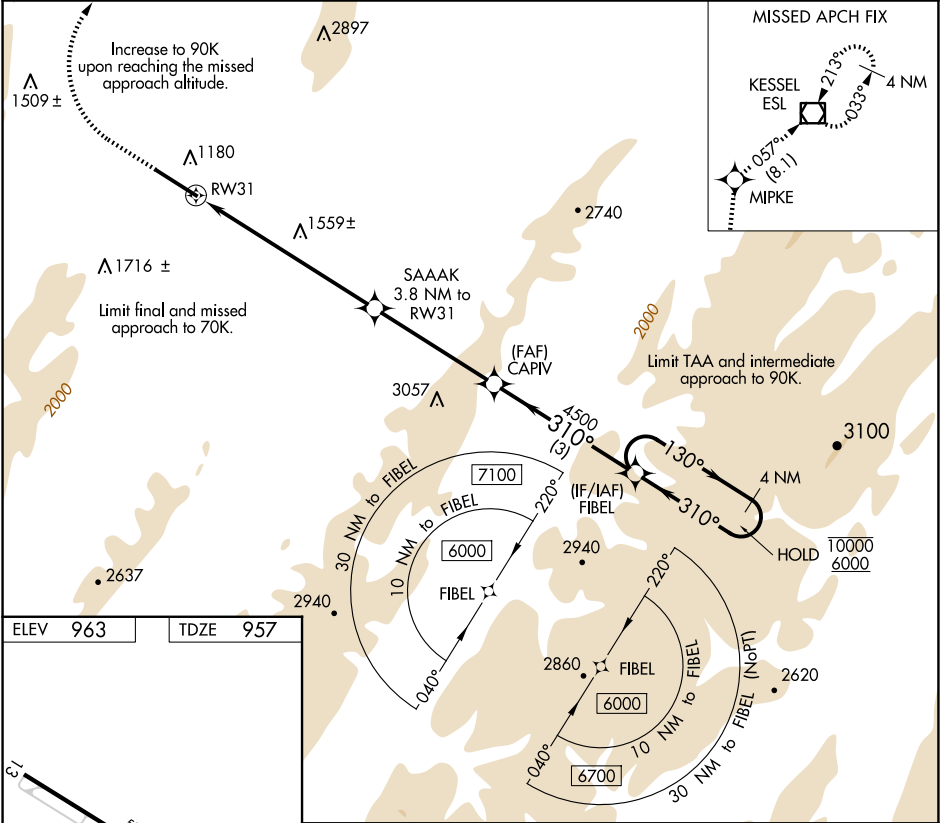
NA

When local altimeter setting not received, procedure NA.

-8°C

MISSED APPROACH: Climb to 1380 then climbing right turn to 5000 direct MIPKE and on track 057° to ESL VOR/DME and hold.

AWOS-3 124.475	WASHINGTON CENTER 133.55 322.55	UNICOM 122.8 (CTAF) 0
-------------------	------------------------------------	--------------------------



ELEV 963

TDZE 957

1380

5000

MIPKE

tr 057°

ESL

VGSI and descent angles not coincident (VGSI Angle 6.50/TCH 46).

1.3 NM to RW31

3.8 NM to RW31

5.20° HCH 46

310°

130°

10000

6000

REIL Rws 13 and 31 0

MIRL Rwy 13-31 0

CATEGORY

COPTER

LNAV MDA

1880-3/4 923 (1000-3/4)