

GIDDINGS, TEXAS

AL-6499 (FAA)

25051

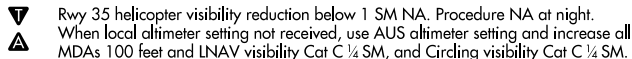
APP CRS
348°

Rwy Idg	4000
TDZE	473
Apt Elev	484

RNAV (GPS) RWY 35

GIDDINGS-LEE COUNTY (GYB)

RNP APCH - GPS.



MISSED APPROACH: Climb to 2500 direct PPENS and hold.

AWOS-3
119.225

AUSTIN APP CON
127.225 317.65

UNICOM
123.05 (CTAF)

MISSED APCH FIX




MSA RWSS 23 NM

2600



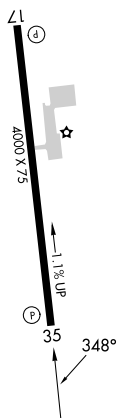
CRAYS

2600
074°
(19)





ELEV 484

TDZE 473

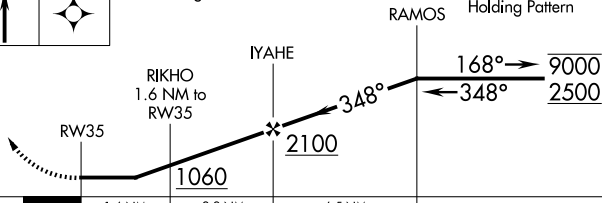


MIRL Rwy 17-35

2500	PPENS
	

Visual Segment - Obstacles.

Holding Pattern



	1.6 NM	2.9 NM	6.5 NM	
CATEGORY	A	B	C	D
LNAV MDA	800-1 327 (400-1)			NA
CIRCLING	880-1 396 (400-1)	1160-1 676 (700-1)	1240-2¼ 756 (800-2¼)	NA

GIDDINGS, TEXAS

Amdt 1 20FEB25

30°10'N-96°59'W

GIDDINGS-LEE COUNTY (GYB)

RNAV (GPS) RWY 35

SC-5, 10 JUL 2025 to 07 AUG 2025