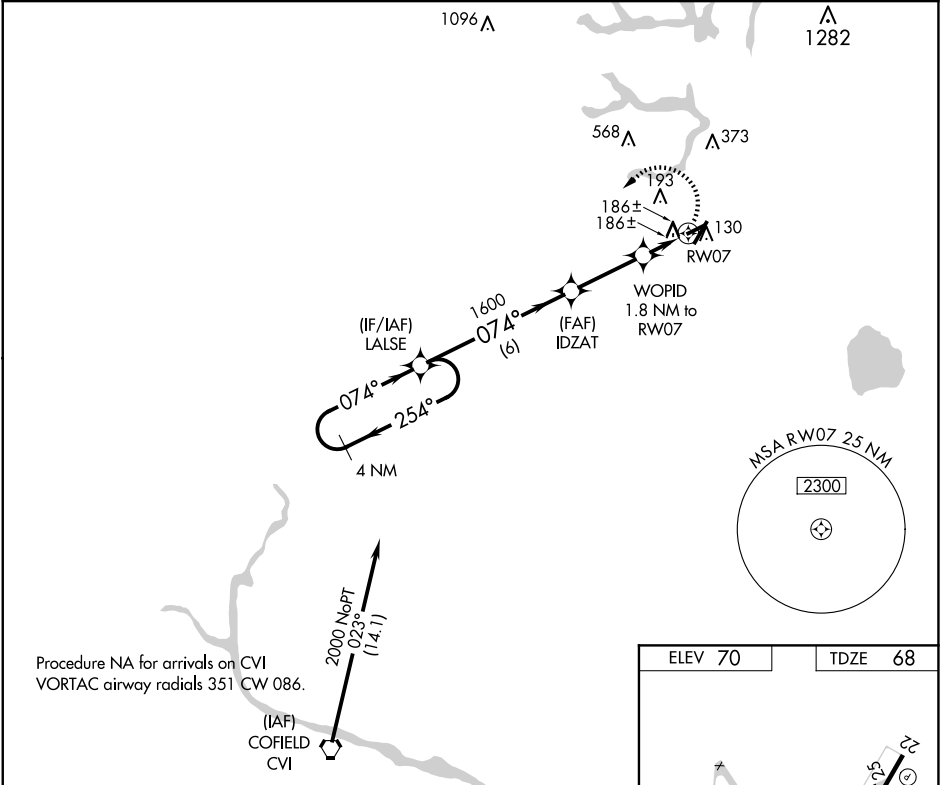


WAAS CH 78424 W07A	APP CRS 074°	Rwy Idg 3750 TDZE 68 Apt Elev 70
--	------------------------	---

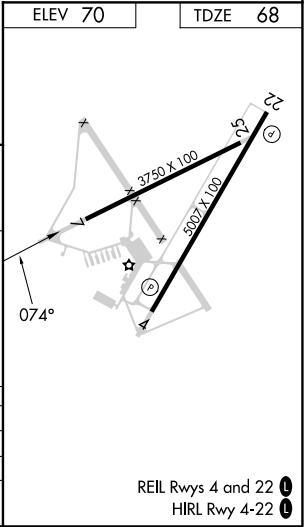
RNAV (GPS) RWY 7
SUFFOLK EXEC (SFQ)

<div><div></div><div></div></div> <div>DME/DME RNP-0.3 NA. Helicopter visibility reduction below ¾ SM NA. When local altimeter setting not received, use Norfolk Intl altimeter setting and increase all MDA 60 feet.</div>	MISSED APPROACH: Climbing left turn to 2000 direct LALSE and hold.
---	--

AWOS-3 119.375	NORFOLK APP CON 127.9 269.425	UNICOM 122.7 (CTAF)
--------------------------	---	-------------------------------



4 NM Holding Pattern		Visual Segment - Obstacles.		2000	LALSE
CATEGORY	A	B	C	D	
LP MDA	480-1	412 (500-1)		NA	
LNAY MDA	500-1	432 (500-1)		NA	
CIRCLING	500-1 430 (500-1)	560-1 490 (500-1)		NA	



NE-3, 10 JUL 2025 to 07 AUG 2025

NE-3, 10 JUL 2025 to 07 AUG 2025