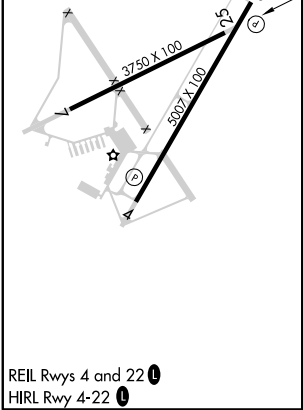
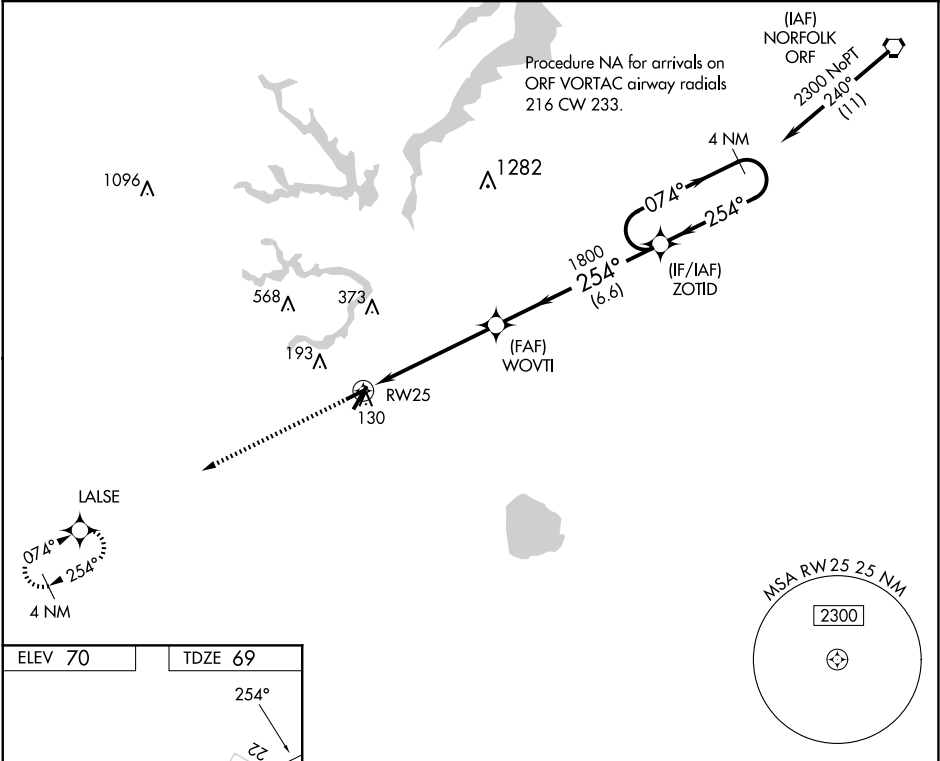


APP CRS	Rwy Idg	3750
254°	TDZE	69
	Apt Elev	70

RNAV (GPS) RWY 25  
SUFFOLK EXEC (SFQ)

<p><b>⚠</b> DME/DME RNP-0.3 NA. Helicopter visibility reduction below 1 SM NA. When local altimeter setting not received, use Norfolk Intl altimeter setting and increase all MDA 60 feet.</p>	<p>MISSED APPROACH: Climb to 2000 direct LALSE and hold.</p>
--	--

AWOS-3 119.375	NORFOLK APP CON 127.9 269.425	UNICOM 122.7 (CTAF) <b>0</b>
-------------------	----------------------------------	---------------------------------



2000	LALSE	Visual Segment - Obstacles.			
		4 NM Holding Pattern			
		ZOTID			
		WOVTI			
		RW25			
		1800			
		5.3 NM			
		6.6 NM			
CATEGORY	A	B	C	D	
LNAV MDA	480-1	411 (500-1)	NA		
<b>C</b> CIRCLING	500-1 430 (500-1)	560-1 490 (500-1)	NA		

NE-3, 10 JUL 2025 to 07 AUG 2025

NE-3, 10 JUL 2025 to 07 AUG 2025