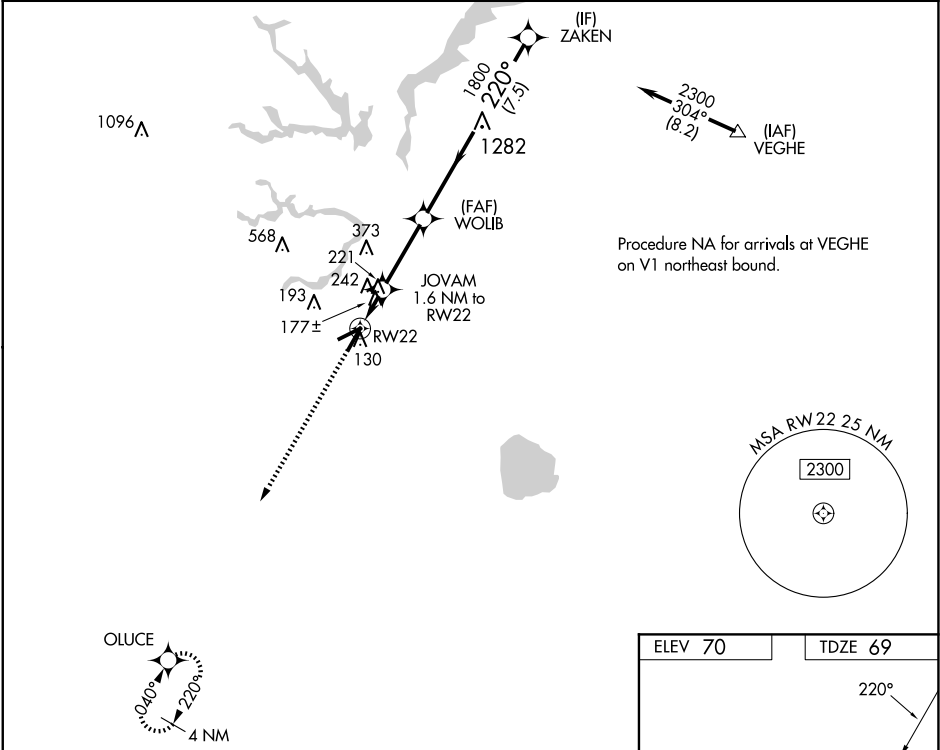


WAAS CH 99325 W22A	APP CRS 220°	Rwy Idg 5007 TDZE 69 Apt Elev 70
--	------------------------	---

RNAV (GPS) RWY 22
SUFFOLK EXEC (SF'Q)

<p>⚠ DME/DME RNP-0.3 NA. Helicopter visibility reduction below ¾ SM NA. VDP NA with Norfolk Intl altimeter setting. When local altimeter setting not received, use Norfolk Intl altimeter setting and increase all MDA 60 feet, and increase LP Cats C and D visibility ¼ mile and LNAV Cats C and D visibility ½ mile.</p> <p>⚠</p>	<p>MISSED APPROACH: Climb to 2000 direct OLUCE and hold.</p>
--	--

AWOS-3 119.375	NORFOLK APP CON 127.9 269.425	UNICOM 122.7 (CTAF) 0
--------------------------	---	---------------------------------



2000	OLUCE	ZAKEN
↑	✧	
	JOVAM 1.6 NM to RW22	WOLIB
	0.9 NM to RW22	2300
	700	1800
	0.9	0.7 NM
	2.9 NM	7.5 NM
CATEGORY	A	B
LP MDA	440-1	371 (400-1)
LNAV MDA	500-1	431 (500-1)
CIRCLING	500-1	560-1
	430 (500-1)	490 (500-1)
		680-1¾
		610 (700-1¾)
		680-2
		610 (700-2)

