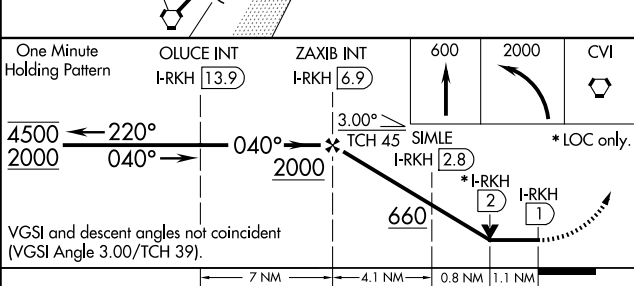
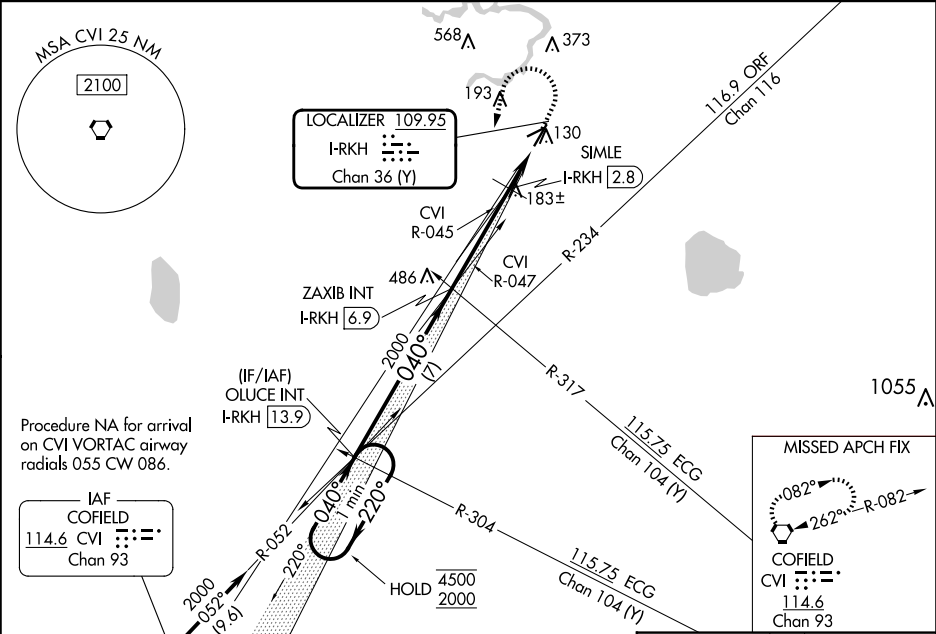


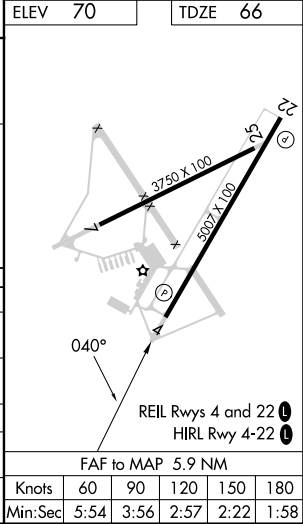
LOC/DME	I-RKH	APP CRS	Rwy Idg	5007
109.95		040°	TDZE	66
Chan 36(Y)			Apt Elev	70

LOC RWY 4
SUFFOLK EXEC (SF'Q)

<div><div><div></div><div></div></div><div>NA</div></div>		MISSED APPROACH: Climb to 600 then climbing left turn to 2000 direct CVI VORTAC and hold.	
AWOS-3 119.375	NORFOLK APP CON 127.9 269.425		UNICOM 122.7 (CTAF) 0



CATEGORY	A	B	C	D
S-4	660-1	594 (600-1)	660-1 3/4	594 (600-1 3/4)
CIRCLING	660-1	590 (600-1)	680-1 3/4 610 (700-1 3/4)	680-2 610 (700-2)
SIMLE FIX MINIMUMS (DME REQUIRED)				
S-4	440-1 374 (400-1)			
CIRCLING	500-1 430 (500-1)	560-1 490 (500-1)	680-1 3/4 610 (700-1 3/4)	680-2 610 (700-2)



NE-3, 10 JUL 2025 to 07 AUG 2025

NE-3, 10 JUL 2025 to 07 AUG 2025