

SC-2, 10 JUL 2025 to 07 AUG 2025

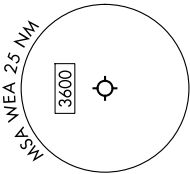
TOP ALTITUDE:  
ASSIGNED BY ATC

RNAV 1 - DME/DME/IRU or GPS required.  
RADAR required for non-GPS equipped aircraft.

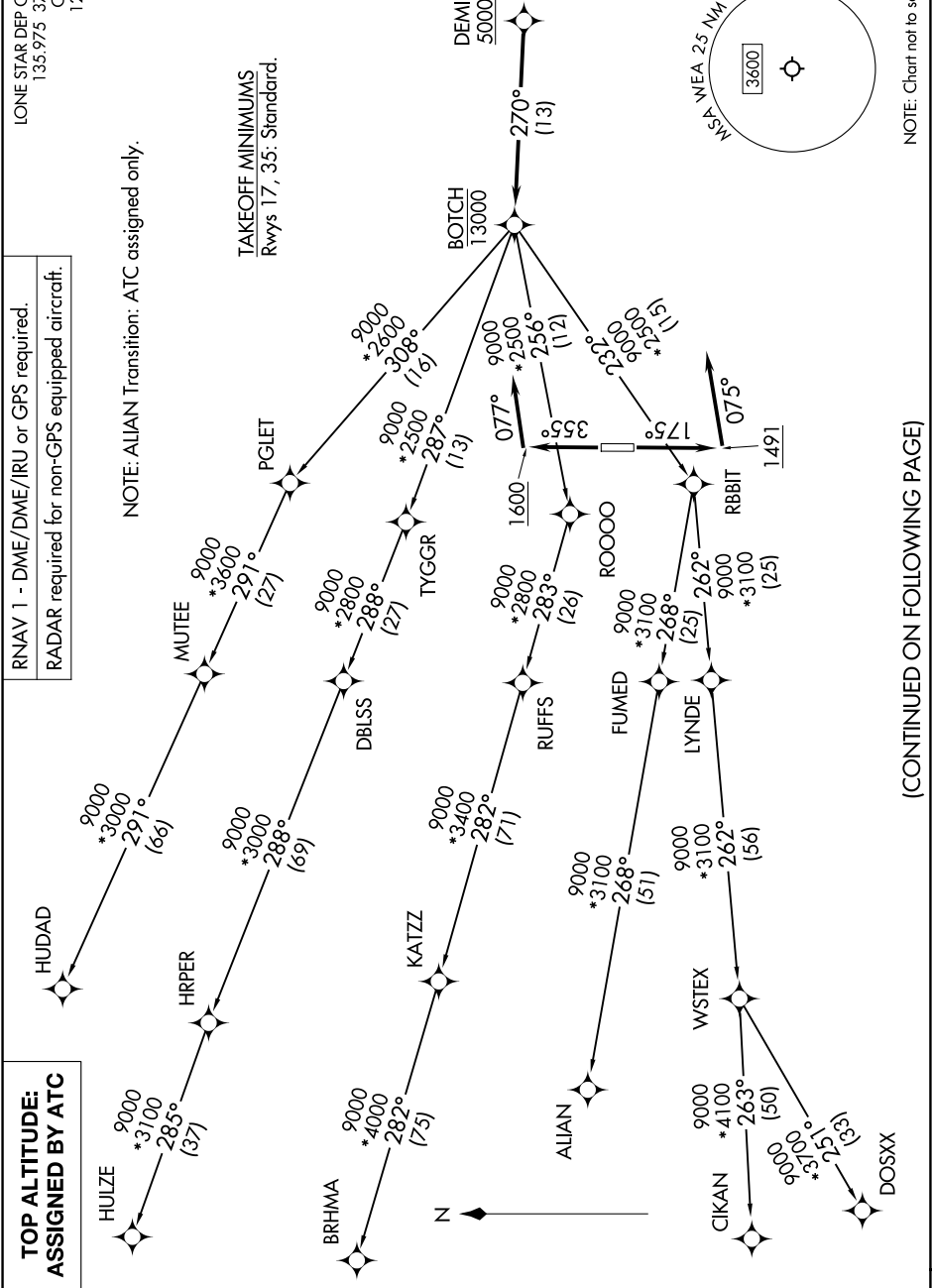
LONE STAR DEP CON  
135 975 379.9  
CTAF  
122.7

NOTE: ALIAN Transition: ATC assigned only.

TAKEOFF MINIMUMS  
Rwys 17, 35: Standard.



NOTE: Chart not to scale.



(CONTINUED ON FOLLOWING PAGE)

SC-2, 10 JUL 2025 to 07 AUG 2025