

| | | | |
|--|------------------------|-----------------------------|---|
| WAAS CH 61119 W35A | APP CRS 354° | Rwy Idg TDZE Apt Elev | 3501 1026 1030 |
|--|------------------------|-----------------------------|---|

RNAV (GPS) RWY 35

BLACKWELL-TONKAWA MUNI (BKN)

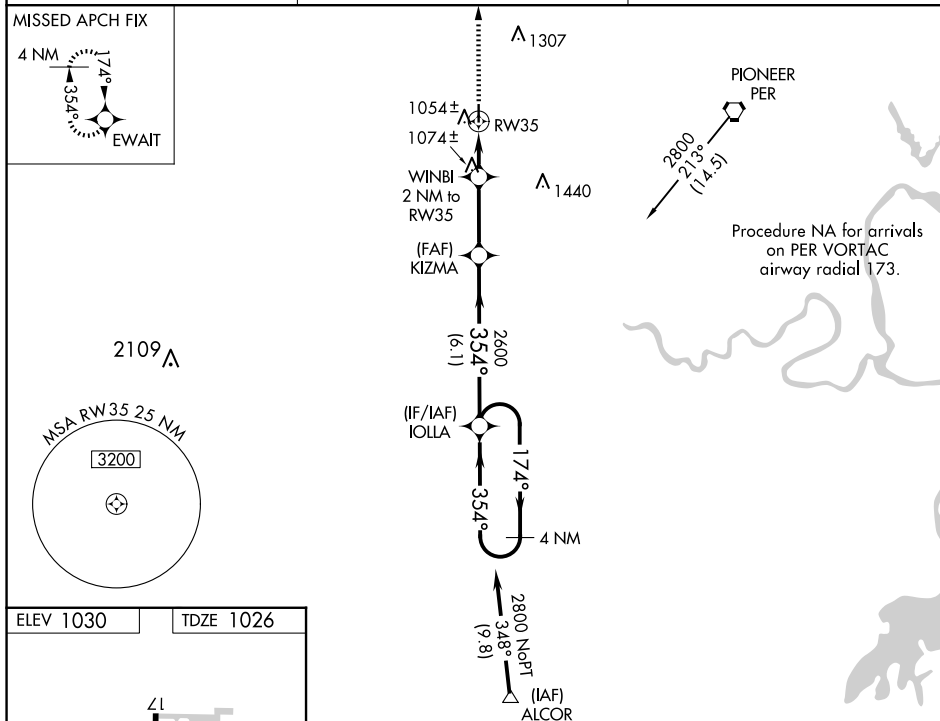
RNP APCH.

▼ For uncompensated Baro-VNAV systems, LNAV/VNAV NA below -17°C or above 54°C. When local altimeter setting not received, use Ponca City altimeter setting and increase all DA 31 feet and all MDA 40 feet and LNAV/VNAV all Cats visibility ¼ mile. Baro-VNAV and VDP NA when using Ponca City altimeter setting.

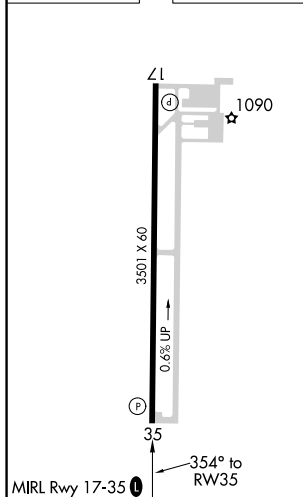
MISSED APPROACH: Climb to 2800 direct EWAIT and hold.

| | | |
|----------------------------|--|---------------------------------|
| AWOS-3PT 120.575 | KANSAS CITY CENTER 127.8 319.1 | UNICOM 122.8 (CTAF) 0 |
|----------------------------|--|---------------------------------|

MISSED APCH FIX



| | | |
|-----------|--|-----------|
| ELEV 1030 | | TDZE 1026 |
|-----------|--|-----------|



2800
↑
WAIT

VGSi and RNAV glidepath not coincident
(VGSi Angle 3.00/TCH 40).

IOLLA

4 NM
Holding Pattern

2800

174°

354°

2600

354°

1680*

1 NM

1 NM

2.8 NM

6.1 NM

GP 3.00°
TCH 40

| CATEGORY | A | B | C | D |
|---------------|--------|-------------|---|----|
| LPV DA | 1276-1 | 250 (300-1) | | NA |
| RNAV/ VNAV | 1324-1 | 298 (300-1) | | NA |
| RNAV MDA | 1340-1 | 314 (400-1) | | NA |