

When VGSI inoperative, Circling Rwy 4L NA at night.

MISSED APPROACH: Climbing right turn to 6400 via IWA R-242 to SECKA Int and hold.

ATIS

128.325

PHOENIX APP CON

123.7 363.0

CHANDLER TOWER★

126.1 (CTAF) 0

133.1

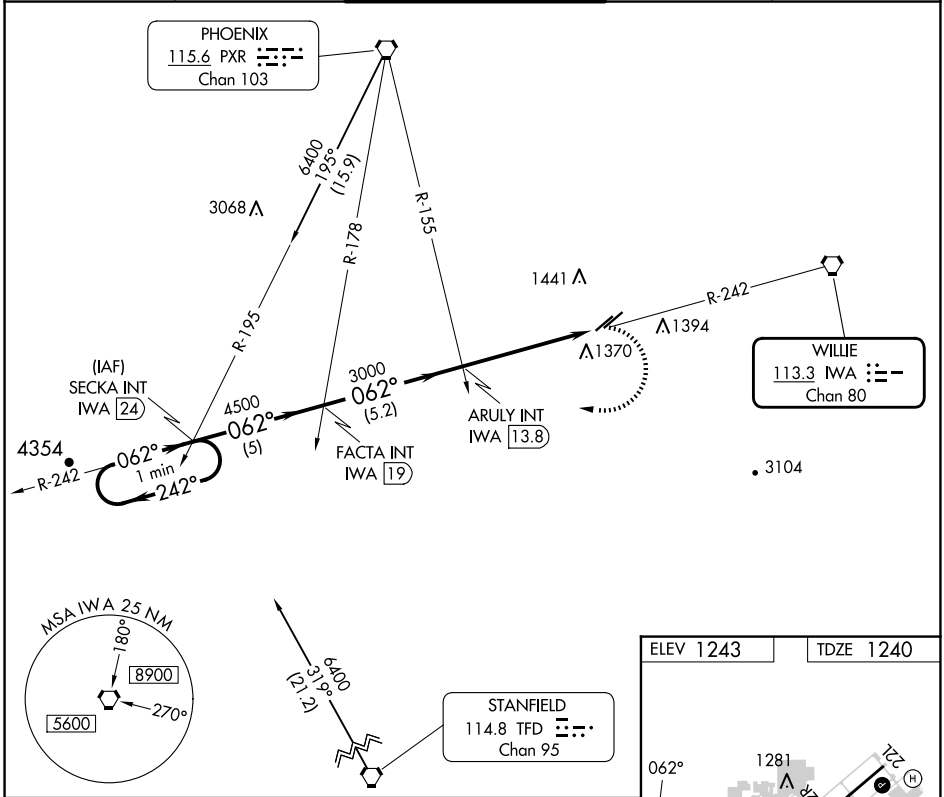
(North and West) (South and East)

GND CON

124.4

UNICOM

122.95



One Minute Holding Pattern

SECKA INT IWA 24

FACTA INT IWA 19

ARULY INT IWA 13.8

SECKA INT

6400

1.4 NM to RWY 4R

3.06° TCH 37

4500

3000

5 NM

5.2 NM

3.9 NM

1.4

ELEV 1243

TDZE 1240

062°

1281

1299

1269±

1265

440 X 75

480 X 75

22

4R

1231±

TWR

CATEGORY	A	B	C	D
S-4R	1680-1	440 (500-1)	1680-1¼ 440 (500-1¼)	NA
CIRCLING	1720-1 477 (500-1)	1760-1 517 (600-1)	1760-1½ 517 (600-1½)	NA

REIL Rwy 4R and 22L

MIRL Rwy 4L-22R and 4R-22L

FAF to MAP 5.3 NM

Knots	60	90	120	150	180
Min:Sec	5:18	3:32	2:39	2:07	1:46