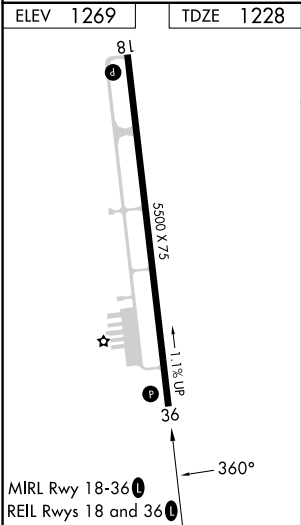
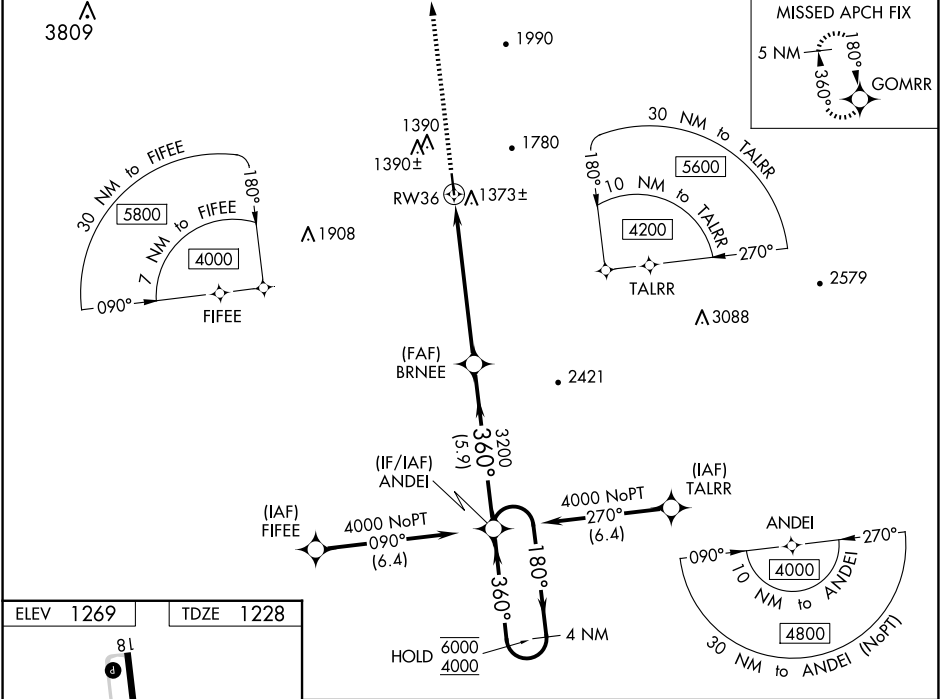


RNP APCH.

▼ Rwy 36 helicopter visibility reduction below ¾ SM NA.
▲ For uncompensated Baro-VNAV systems, LNAV/VNAV NA below -17°C or above 54°C.

MISSED APPROACH: Climb to 5000 direct GOMRR and hold.

AWOS-3 121.125	GREENSBORO APP CON 124.35 269.225	UNICOM 123.0 (CTAF) 0
-------------------	--------------------------------------	--------------------------



5000

GOMRR

↑

✱

*LNAV only.

*1.2 NM to RW36

RW36

1.2 NM

4.9 NM

5.9 NM

BRNEE 3200

ANDEI

4 NM Holding Pattern

180° → 6000

← 360° 4000

GP 3.00°

TCH 40

CATEGORY	A	B	C	D
LPV DA	1527-1		299 (300-1)	
LNAV/VNAV DA	1637-1½		409 (400-1½)	
LNAV MDA	1640-1	412 (400-1)	1640-1½	412 (400-1½)
CIRCLING	1940-1 671 (700-1)	2040-1 771 (800-1)	2180-2¾ 911 (1000-2¾)	2340-3 1071 (1100-3)