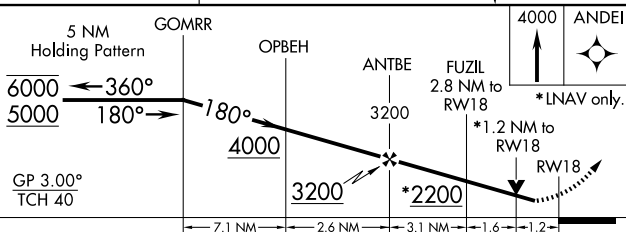
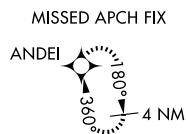
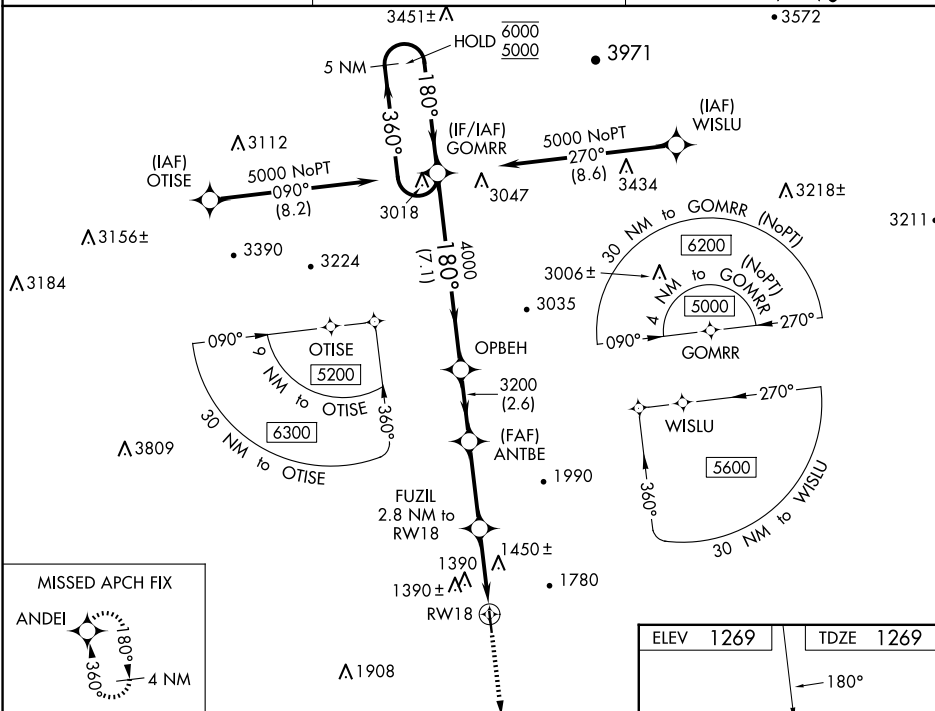



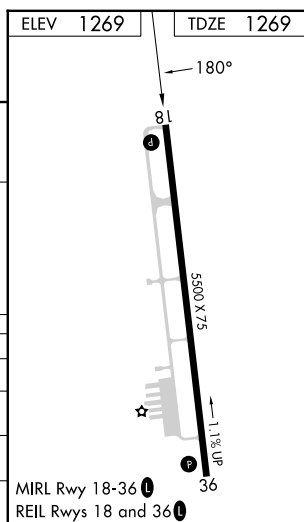
# RNAV (GPS) RWY 18

## MOUNT AIRY/SURRY COUNTY (MWK)

**MISSED APPROACH:** Climb to 4000 direct ANDEI and hold.

UNICOM  
123.0 (CTAF) **L**

CATEGORY		A		B		C		D	
LPV	DA	1522-1				253 (300-1)			
LNAV/ VNAV	DA	1742-1 <sup>3</sup> / <sub>8</sub>				473 (500-1 <sup>3</sup> / <sub>8</sub> )			
LNAV	MDA	1700-1		431 (500-1)		1700-1 <sup>1</sup> / <sub>4</sub>		431 (500-1 <sup>1</sup> / <sub>4</sub> )	
 CIRCLING		1940-1 671 (700-1)		2040-1 771 (800-1)		2180-2 <sup>3</sup> / <sub>4</sub> 911 (1000-2 <sup>3</sup> / <sub>4</sub> )		2340-3 1071 (1100-3)	



SE-2, 10 JUL 2025 to 07 AUG 2025