

NDB FBY 293	APP CRS 186°	Rwy Idg TDZE Apt Elev N/A N/A 1479
-----------------------	------------------------	--

NDB-A

FAIRBURY MUNI (F'BY)

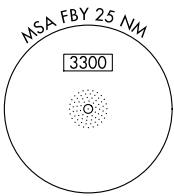
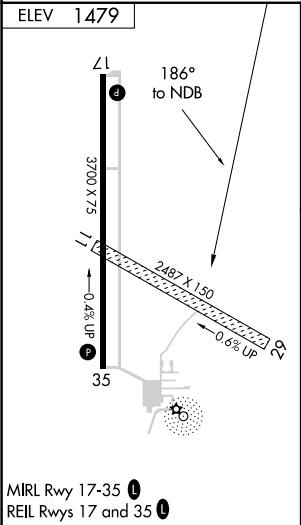
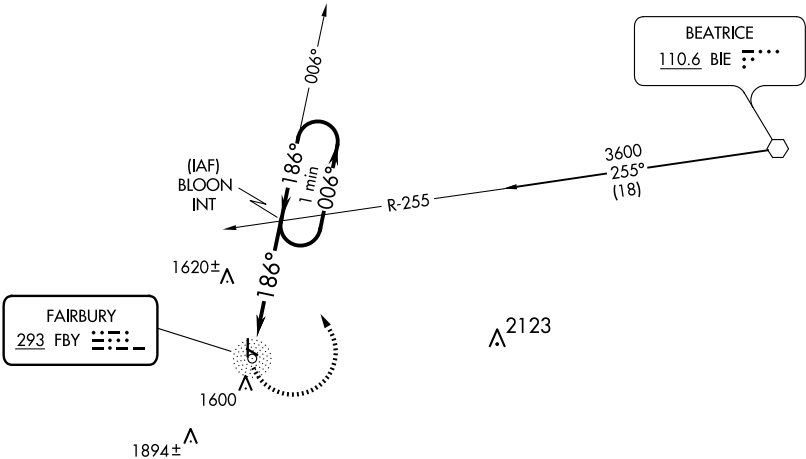
▼

▲ NA

Use Hebron altimeter setting; when not received, use Beatrice altimeter setting and increase all MDAs 40 feet. Circling NA to Rwy 11 and 29.

MISSED APPROACH: Climbing left turn to 3600 via FBY bearing 006° to BLOON INT and hold.

HJH AWOS-3 118.525	MINNEAPOLIS CENTER 126.4 317.7	UNICOM 122.7 (CTAF) 
------------------------------	--	---



3600 FBY 006°	BLOON INT	BLOON INT	One Minute Holding Pattern	
FBY NDB		186°	006° →	3600 ← 186°
5 NM				
CATEGORY	A	B	C	D
CIRCLING	2000-1 521 (600-1)	2040-1 561 (600-1)	NA	