

RNP APCH.

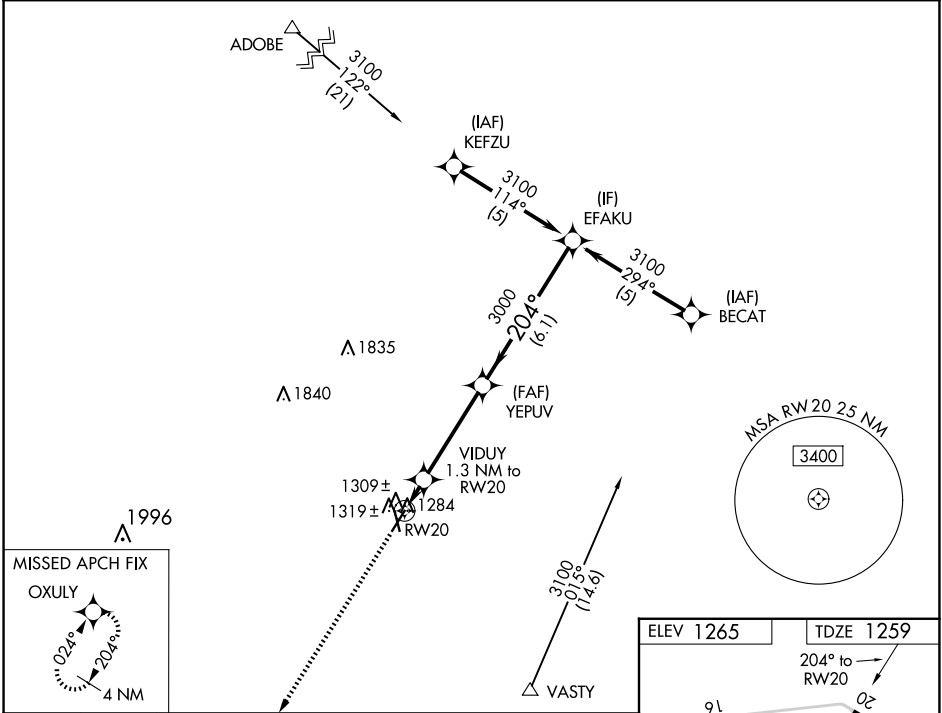
▼

▲

Baro-VNAV NA when using Frederick altimeter setting. For uncompensated Baro-VNAV systems, LNAV/VNAV NA below -17°C or above 54°C. Rwy 20 helicopter visibility reduction below ¾ SM NA. When local altimeter setting not received, use Frederick altimeter setting: increase all DA/MDA 40 feet.

MISSED APPROACH:  
Climb to 3300 direct OXULY and hold.

AWOS-3 <b>118.525</b>	ALTUS APP CON ★ <b>125.1 353.7</b>	UNICOM <b>122.8 (CTAF) 0</b>
--------------------------	---------------------------------------	---------------------------------



3300 OXULY

VGSI and RNAV glidepath not coincident (VGSI Angle 3.00/TCH 25).

\*LNAV only

VIDUY 1.3 NM to RW20

YEPUV 3000

EFAKU 3100

204°

3000

1700\*

GP 3.00° TCH 40

1.3 NM

4 NM

6.1 NM

CATEGORY	A	B	C	D
LPV DA	1509-1	250 (300-1)		NA
LNAV/VNAV DA	1585-1¼	326 (400-1¼)		NA
LNAV MDA	1580-1	321 (400-1)		NA
CIRCLING	1660-1 395 (400-1)	1720-1 455 (500-1)	1800-1½ 535 (600-1½)	NA

ELEV 1265

TDZE 1259

204° to RW20

91 4304 X 80

02 5099 X 100

34

MIRL Rwy 2-20 and 16-34