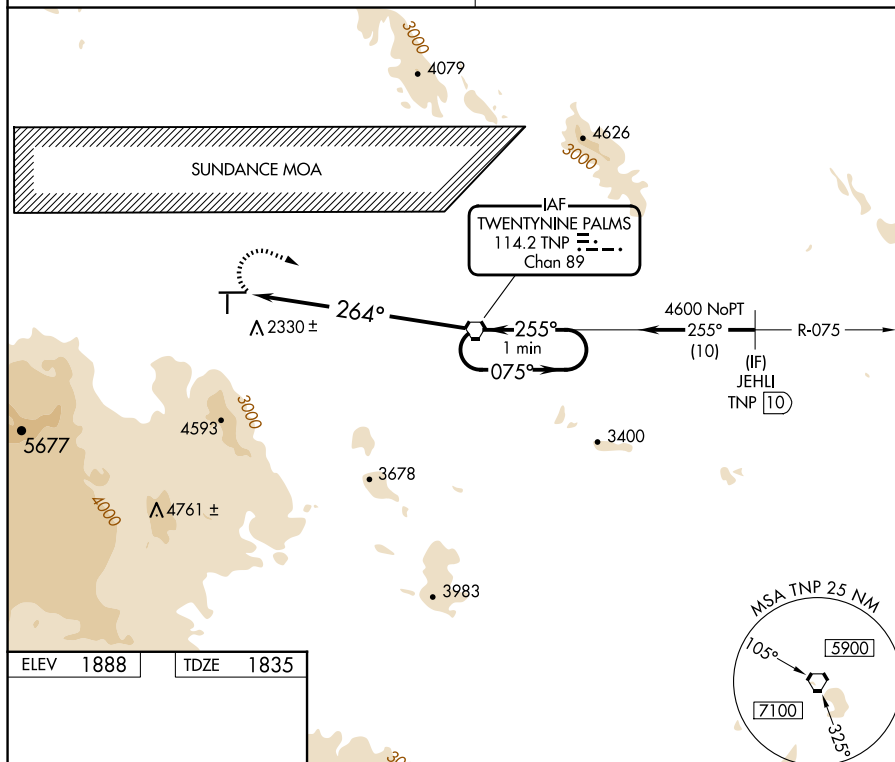


VOR RWY 26
TWENTYNINE PALMS (TNP)

MISSED APPROACH: Climbing right turn to 5900 direct TNP VORTAC and hold, continue climb-in-hold to 5900.

AUNICOM
122.8 (CTAF) **L**



ELEV 1888
TDZE 1835

Diagram illustrating the runway layout and dimensions:

- Runway Length: 5531 X 75
- Elevation: 1888
- TDZE: 1835
- Approach Path: 3797 X 50
- Angle: 264°
- Gradients: 1.6% UP, 0.9% UP
- Markers: 35, 26

REIL Rwy's 8 and 26 **1**

MIRL Rwy's 8-26 and 17-35 **1**

FAF to MAP 8.3 NM					
Knots	60	90	120	150	180
Min:Sec	8:18	5:32	4:09	3:19	2:46

34°08'N-115°57'W

TWENTYNINE PALMS (TNP)
VOR RWY 26

SW-3, 10 JUL 2025 to 07 AUG 2025