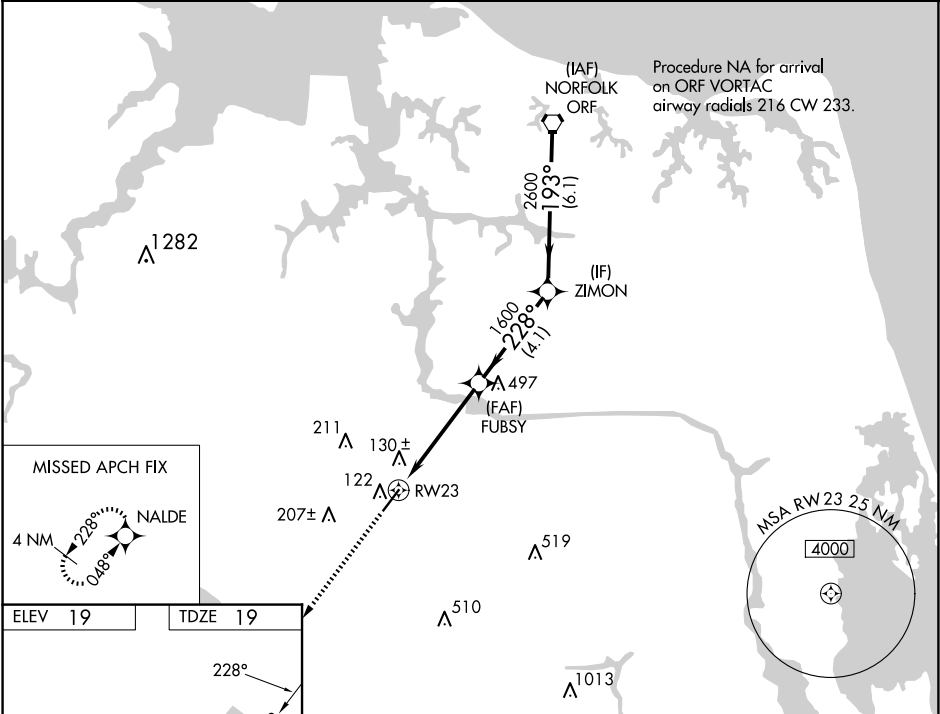


WAAS CH 65922 W23A	APP CRS 228°	Rwy Idg TDZE Apt Elev	5500 19 19
--	------------------------	-----------------------------	---------------------------------------

RNAV (GPS) RWY 23

CHESAPEAKE RGNL (CPK)

RNP APCH. ▼ ▲ Rwy 23 helicopter visibility reduction below 1 SM NA. When local altimeter setting not received, use Norfolk Intl altimeter setting and increase all DA 36 feet and all MDA 40 feet. Baro-VNAV and YDP NA with Norfolk Intl altimeter setting. For uncompensated Baro-VNAV systems, LNAV/VNAV NA below -15°C or above 43°C.		MISSED APPROACH: Climb to 2000 direct NALDE and hold.	
AWOS-3 123.675	NORFOLK APP CON 118.9 353.7	GCO 135.075	UNICOM 123.075 (CTAF) 0



ELEV 19 TDZE 19		2000 NALDE		VGSI and RNAV glidepath not coincident (VGSI Angle 3.00/TCH 42).		ORF VORTAC	
228°		*LNAV only		*1.3 NM to RW23		193°	
5500 X 100		RW23		FUBSY 1600		ZIMON 2600	
1.3		3.5 NM		4.1 NM		6.1 NM	
CATEGORY		A		B		C	
LPV DA		311-1		292 (300-1)			
LNAV/VNAV DA		312-1		293 (300-1)			
LNAV MDA		480-1		461 (500-1)		480-1 3/8 461 (500-1 3/8)	