

WAAS CH <b>45803</b> <b>W19A</b>	APP CRS <b>187°</b>	Rwy Ldg <b>4206</b> TDZE <b>795</b> Apt Elev <b>798</b>
--	------------------------	---

RNAV (GPS) RWY 19

SKYHAVEN (RCM)

RNP APCH - GPS.

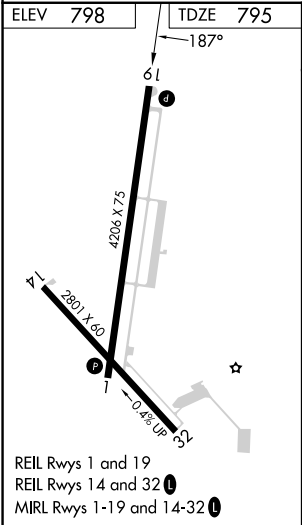
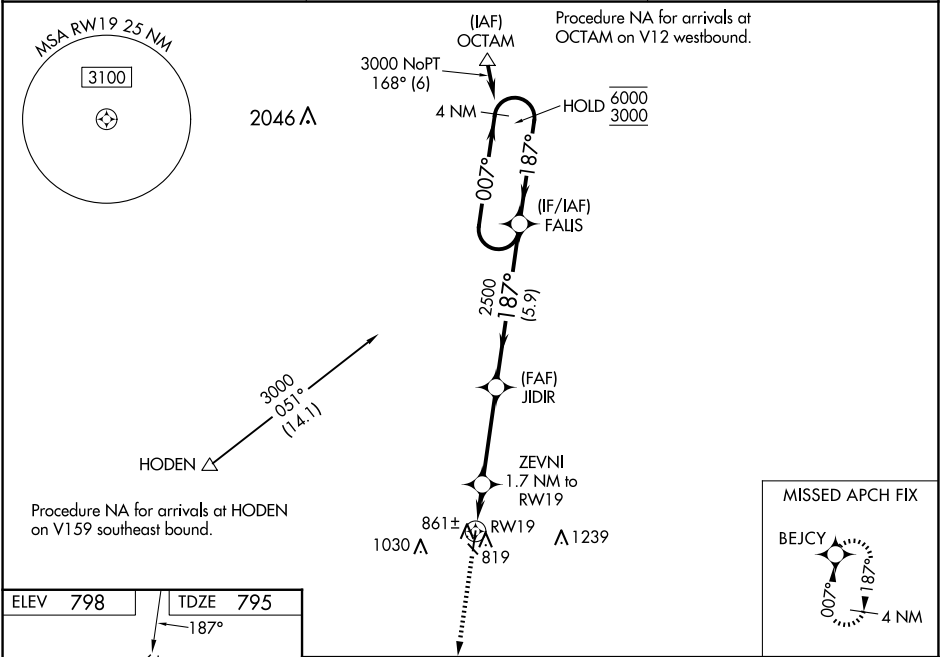
▼

▲

Baro-VNAV NA when using SZL altimeter setting. For uncompensated Baro-VNAV systems, LNAV/VNAV NA below -16°C or above 54°C. Rwy 19 helicopter visibility reduction below ¾ SM NA. When local altimeter setting not received, use SZL altimeter setting and increase LPV DA to 1084 feet; increase LNAV/VNAV DA to 1139 feet; increase all MDAs 40 feet; and Circling visibility Cat C ¼ SM.

MISSED APPROACH: Climb to 3000 direct BEJCY and hold.

AWOS-3PT <b>119.575</b>	WHITEMAN APP CON ★ <b>127.45 284.0</b>	UNICOM <b>123.0</b> (CTAF) <b>0</b>
----------------------------	---	--



ELEV 798 TDZE 795		187°		61	
4206 X 75		2801 X 60		0.41° UP	
REIL Rwy 1 and 19		REIL Rwy 14 and 32		MIRL Rwy 1-19 and 14-32	
3000		BEJCY		FALIS	
ZEVNI 1.7 NM to RWY 19		JIDIR 2500		4 NM Holding Pattern	
RWY 19		1360		GP 3.00° TCH 40	
1.7 NM		3.5 NM		5.9 NM	
CATEGORY	A	B	C	D	
LPV DA	1045-1	250 (300-1)		NA	
LNAV/VNAV DA	1100-1	305 (400-1)		NA	
LNAV MDA	1240-1	445 (500-1)	1240-1 3/8 445 (500-1 3/8)	NA	
CIRCLING	1260-1 462 (500-1)	1340-1 542 (600-1)	1380-1 1/2 582 (600-1 1/2)	NA	