

WAAS
CH **65903**
W01A

APP CRS
007°

Rwy Ldg **4206**
TDZE **794**
Apt Elev **798**

RNAV (GPS) RWY 1
SKYHAVEN (RCM)

RNP APCH - GPS.

▼

⚠

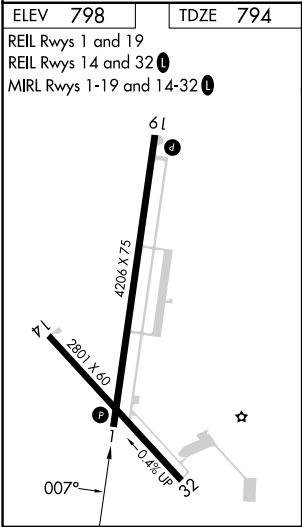
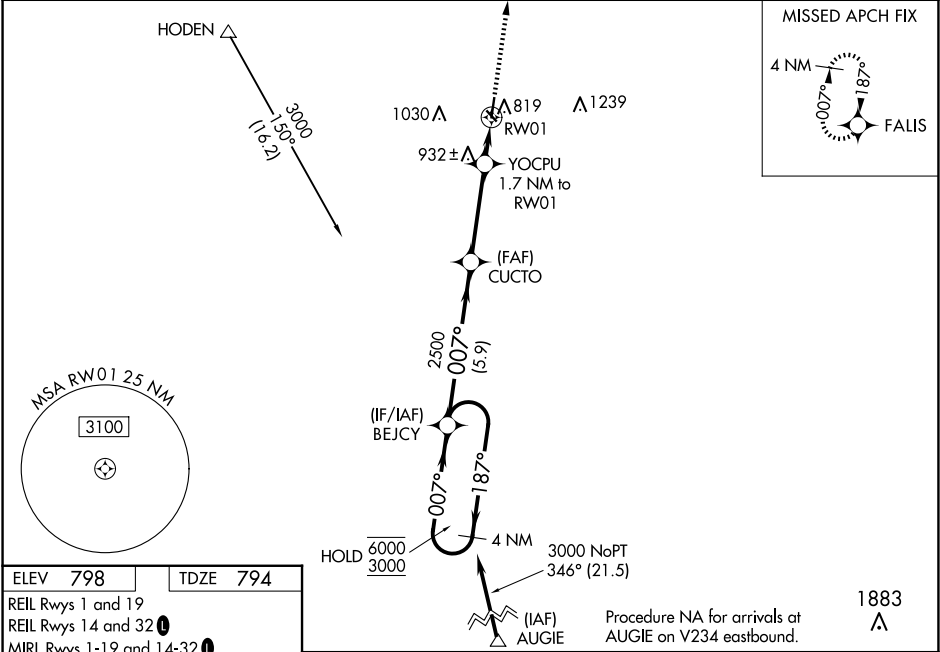
Baro-VNAV NA when using SZL altimeter setting. Rwy 1 helicopter visibility reduction below ¾ SM NA. For uncompensated Baro-VNAV systems, LNAV/VNAV NA below -16°C or above 54°C. When local altimeter setting not received, use SZL altimeter setting and increase LPV DA to 1083 feet; increase LNAV/VNAV DA to 1194 feet and all visibilities ½ SM; increase all MDAs 40 feet and LNAV visibility Cat C ½ SM, and Circling visibility Cat C ¼ SM.

MISSED APPROACH: Climb to 3000 direct FALIS and hold.

AWOS-3PT
119.575

WHITEMAN APP CON ★
127.45 284.0

UNICOM
123.0 (CTAF) **0**



				3000	FAILS
GP 3.00° TCH 36					
CATEGORY		A	B	C	D
LPV	DA	1044-1 250 (300-1)			NA
LNAV/ VNAV	DA	1155-1 361 (400-1)			NA
LNAV	MDA	1220-1 426 (500-1)	1220-1¼ 426 (500-1¼)		NA
CIRCLING		1260-1 462 (500-1)	1340-1 542 (600-1)	1380-1½ 582 (600-1½)	NA