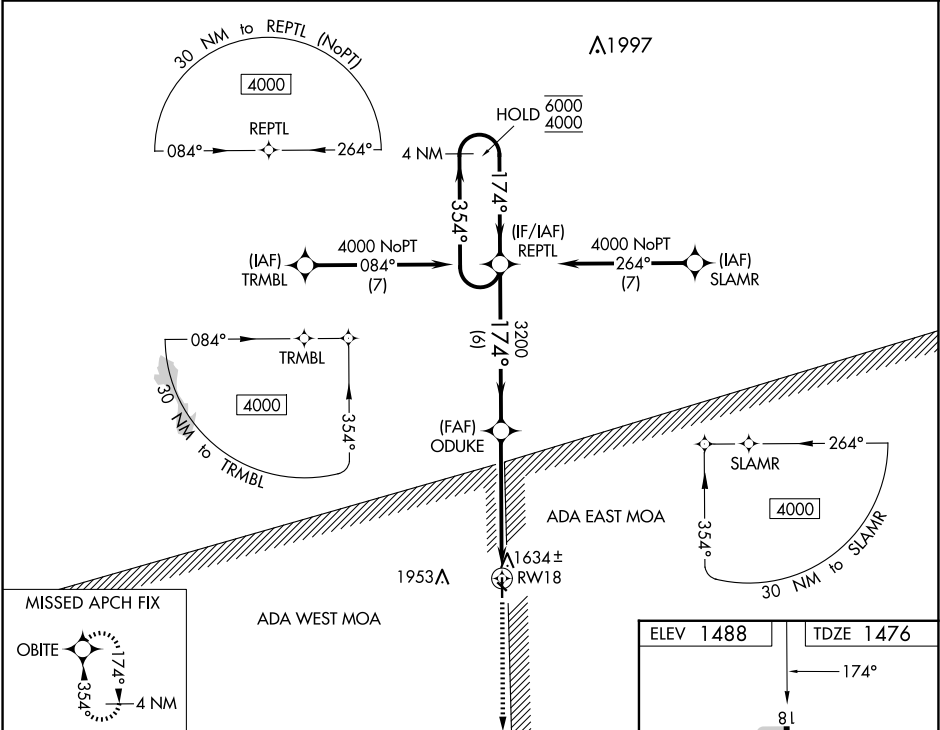


WAAS CH <b>69244</b> <b>W18A</b>	APP CRS <b>174°</b>	Rwy Idg <b>4000</b> TDZE <b>1476</b> Apt Elev <b>1488</b>
----------------------------------------	------------------------	-----------------------------------------------------------------

RNAV (GPS) RWY 18

BLOSSER MUNI (CNK)

RNP APCH-GPS. ▼ Rwy 18 helicopter visibility reduction below 1 SM NA. For uncompensated Baro-VNAV systems, LNAV/VNAV NA below -20°C or above 54°C. ▲ Baro-VNAV and VDP NA when using Hebron Muni altimeter setting.		MISSED APPROACH: Climb to 4000 direct OBITE and hold.
ASOS <b>123.825</b>	KANSAS CITY CENTER <b>134.9 363.2</b>	UNICOM <b>122.8 (CTAF) 0</b>



VGSI and RNAV glidepath not coincident (VGSI Angle 3.00/TCH 35).				
4 NM Holding Pattern REPTL				
6000 ← 354° 4000 → 174°				
GP 3.00° TCH 40				
6 NM 4 NM 1.3 NM				
CATEGORY	A	B	C	D
LPV DA	1738-1	262 (300-1)	NA	
LNAV/VNAV DA	1776-1	300 (300-1)	NA	
LNAV MDA	1920-1	444 (500-1)	NA	

