

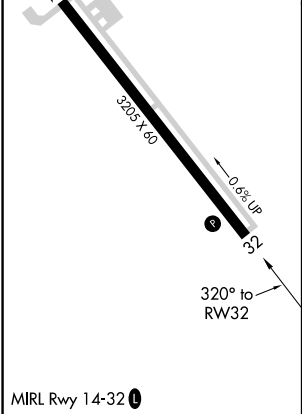
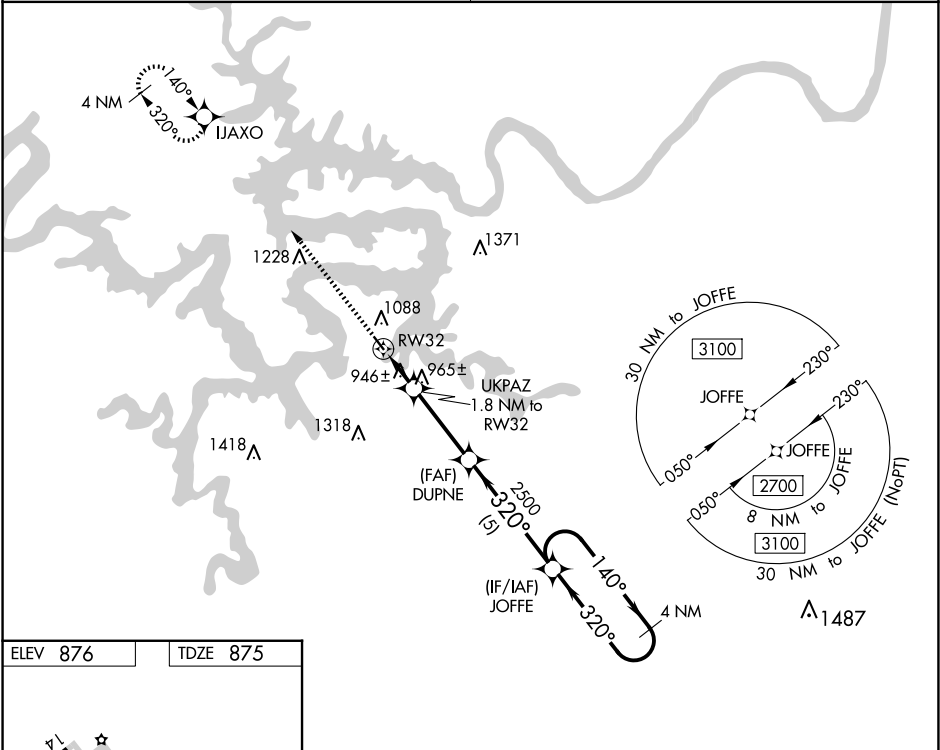
WAAS CH <b>86832</b> <b>W32A</b>	APP CRS <b>320°</b>	Rwy Idg <b>3205</b> TDZE <b>875</b> Apt Elev <b>876</b>
--	------------------------	---

RNAV (GPS) RWY 32

GRAND GLAIZE-OSAGE BEACH (K15)

<div><div>W</div><div>NA</div></div> <div>DME/DME RNP-0.3 NA. Use Kaiser Lake Ozark altimeter setting; when not received, use Camdenton altimeter setting and increase all MDA 40 feet. Procedure NA at night. Helicopter visibility reduction below 1 SM NA.</div>	MISSED APPROACH: Climb to 2700 direct IJAXO and hold.
---	---

MIZZU APP CON <b>124.1 353.925</b>	UNICOM <b>122.8 (CTAF) 1</b>
---------------------------------------	---------------------------------



2700	IJAXO	Visual Segment - Obstacles.	JOFFE	4 NM Holding Pattern
		UKPAZ 1.8 NM to RW32	DUPNE	140° → 2700
		RW32	2500	← 320°
		1.8 NM	3.2 NM	5 NM
CATEGORY	A	B	C	D
LP MDA	1220-1	345 (400-1)	NA	NA
LNAV MDA	1240-1	365 (400-1)	NA	NA
CIRCLING	1420-1	544 (600-1)	NA	NA