

WAAS

CH **48932**

W14A

APP CRS

140°

Rwy Idg

3205

TDZE

876

Apt Elev

876

RNAV (GPS) RWY 14

GRAND GLAIZE-OSAGE BEACH (K15)

NA

Use Kaiser Lake Ozark altimeter setting; when not received, use Camdenton altimeter setting and increase all MDA 40 feet. DME/DME RNP- 0.3 NA. Procedure NA at night. Helicopter visibility reduction below 1 SM NA.

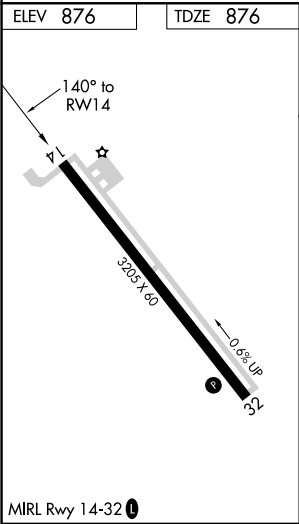
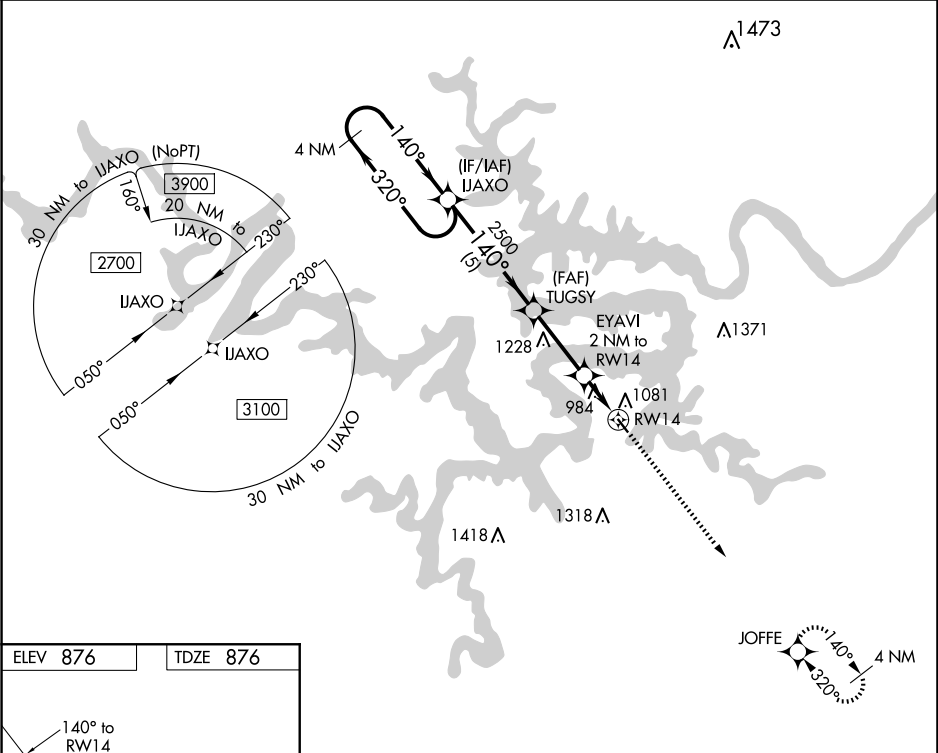
MISSED APPROACH: Climb to 2700 direct JOFFE and hold.

MIZZU APP CON

124.1 353.925

UNICOM

122.8 (CTAF) 0



Visual Segment - Obstacles.				2700	JOFFE
CATEGORY	A	B	C	D	
LP MDA	1300-1	424 (500-1)	NA		
LNAV MDA	1360-1	484 (500-1)	NA		
CIRCLING	1420-1	544 (600-1)	NA		