

WASHINGTON, MISSOURI

AL-6478 (FAA)

22083

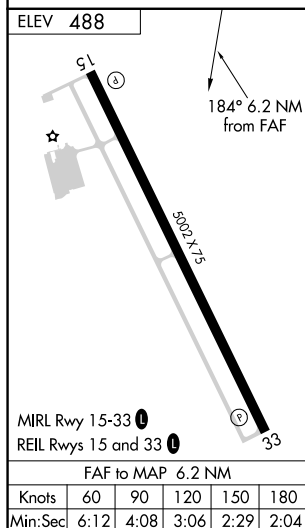
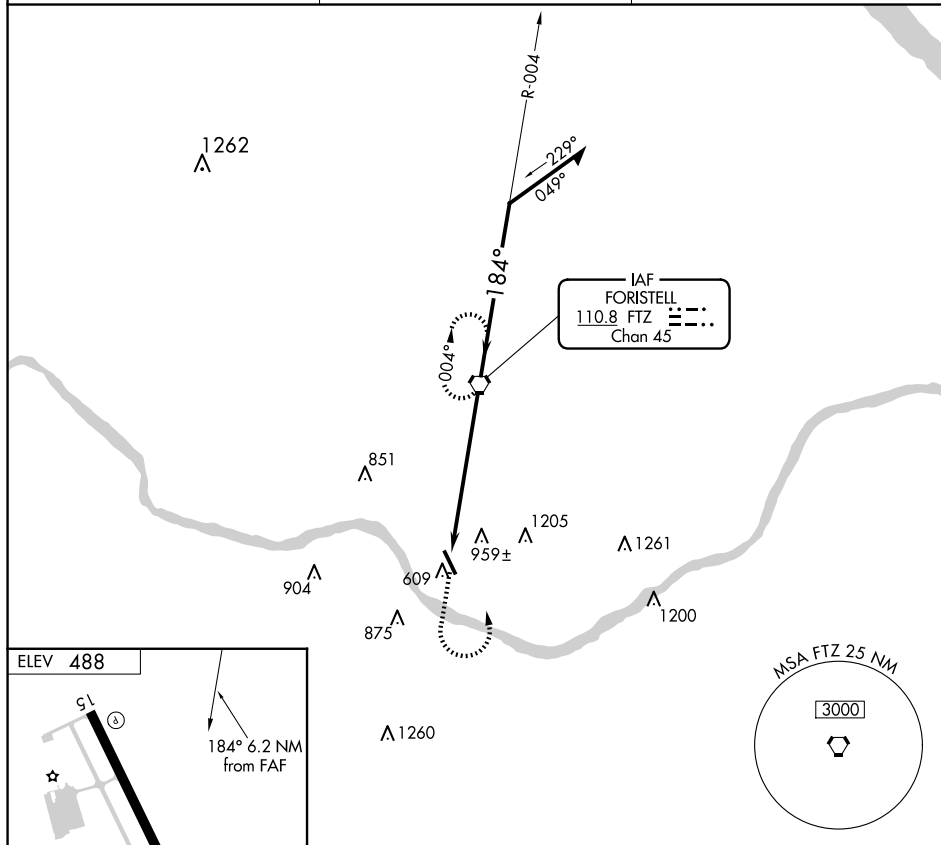
VORTAC FTZ 110.8 Chan 45	APP CRS 184°	Rwy Idg TDZE Apt Elev	N/A N/A 488
--	------------------------	-----------------------------	--

VOR-A
WASHINGTON RGNL (FYG)

T When local altimeter setting not received, use Spirit of
A St. Louis altimeter setting and increase all MDAs 60 feet.

MISSED APPROACH: Climb to 1500 then climbing left turn to 2500 direct FTZ VORTAC and hold.

AWOS-3PT 121.325	ST. LOUIS APP CON 126.5 254.3	UNICOM 122.8 (CTAF) 0
----------------------------	---	---------------------------------



CATEGORY	A	B	C	D
CIRCLING	1220-1 732 (800-1)	1260-1¼ 772 (800-1¼)	1520-3 1032 (1100-3)	NA

WASHINGTON, MISSOURI

Amdt 2A 07OCT21

38° 35'N - 91° 00'W

WASHINGTON RGNI (FYG)

VOR-A

NC-3, 10 JUL 2025 to 07 AUG 2025

NC-3, 10 JUL 2025 to 07 AUG 2025