

VOR/DME MBS  
**114.35**  
Chan **90Y**

APP CRS  
**125°**

Rwy Idg  
TDZE  
Apt Elev  
**602**

N/A  
N/A  
**602**

VOR/DME-A

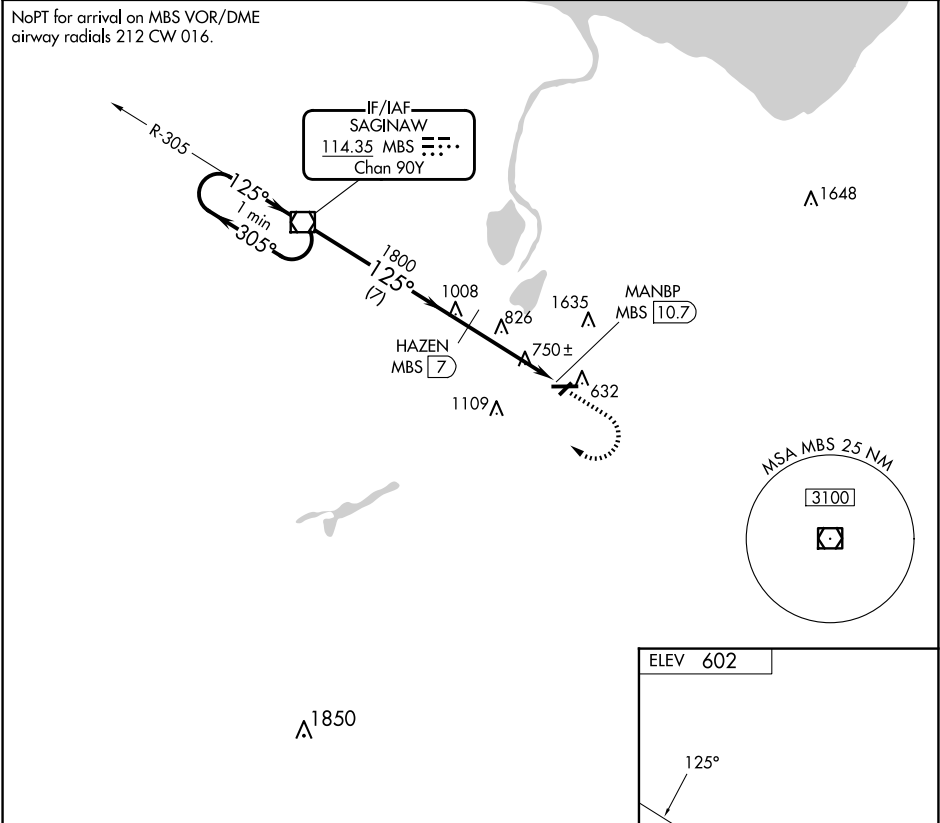
SAGINAW COUNTY/H W BROWNE (HYX)

⚠

Circling to Rwy 5/23 NA at night. When local altimeter setting not received, use Saginaw MBS Intl altimeter setting and increase all MDA 40 feet and increase Circling Cat C visibility ¼ SM. Circling NA for Cat C north of Rwy 10-28.

MISSED APPROACH: Climb to 1900 then climbing right turn to 3000 direct MBS VOR/DME and hold.

|                            |  |                                 |
|----------------------------|--|---------------------------------|
| AWOS-3PT<br><b>118,325</b> | GREAT LAKES APP CON ★<br><b>120,95 235,625</b> | UNICOM<br><b>122.8 (CTAF) 0</b> |
|----------------------------|--|---------------------------------|



One Minute Holding Pattern

MBS VOR/DME

1900

3000

MBS

3000

←305°

125°→

125°

HAZEN MBS 7

1800

MANBP MBS 10.7

7 NM

3.7 NM

|          |        |             |                         |    |
|----------|--------|-------------|-------------------------|----|
| CATEGORY | A      | B           | C                       | D  |
| CIRCLING | 1160-1 | 558 (600-1) | 1460-2½<br>858 (900-2½) | NA |

REIL Rwy 10 0

HIRL Rwy 10-28 0

MIRL Rwy 5-23 0

EC-1, 10 JUL 2025 to 07 AUG 2025

EC-1, 10 JUL 2025 to 07 AUG 2025