

WAAS CH 90200 W28A	APP CRS 277°	Rwy Idg TDZE Apt Elev	5002 599 602
----------------------------------------	------------------------	-----------------------------	-----------------------------------------

RNAV (GPS) RWY 28

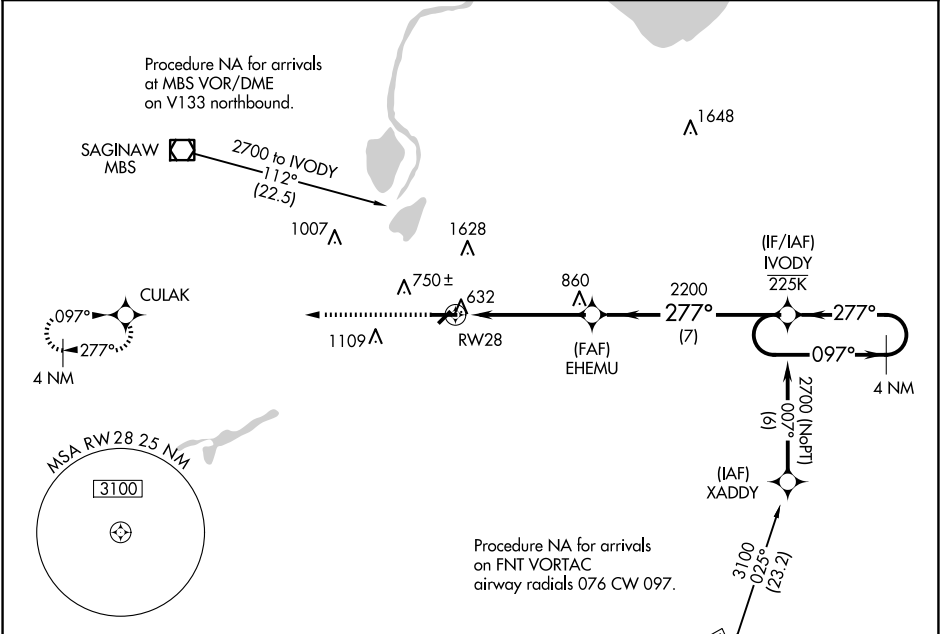
SAGINAW COUNTY/H W BROWNE (HYX)

⚠ Inop table does not apply to LPV DA. For uncompensated Baro-VNAV systems, LNAV/VNAV NA below -18°C (0°F) or above 54°C (130°F). Circling NA for Cat C north of Rwy 10-28. Circling Rwy 5, 23 NA at night. DME/DME RNP-0.3 NA. For inop ALS, increase LNAV/VNAV all Cats visibility to ½ SM.

MALSF

MISSED APPROACH:
Climb to 2800 direct CULAK and hold.

AWOS-3PT 118.325	GREAT LAKES APP CON* 120.95 235.625	UNICOM 122.8 (CTAF) 0
----------------------------	-----------------------------------------------	---------------------------------



ELEV 602	TDZE 599
----------	----------

2800 CULAK

*LNAV only

*1.4 NM to RW28

277°

10 5002 X 100 7952 X 60

VGSI and RNAV glidepath not coincident (VGSI Angle 3.00/TCH 44).

4 NM Holding Pattern

EHEMU 2200 IVODY 277° 097° 2700

2200

GP 3.00° TCH 44

CATEGORY	A	B	C	D
LPV DA	804-¾	205 (300-¾)		NA
LNAV/VNAV DA	849-¾	250 (300-¾)		NA
LNAV MDA	1080-¾ 481 (500-¾)	1080-1½ 481 (500-1½)		NA
CIRCLING	1100-1 498 (500-1)	1460-2½ 858 (900-2½)		NA

REIL Rwy 10 0

HIRL Rwy 10-28 0

MIRL Rwy 5-23 0

RNAV (GPS) RWY 28

EC-1, 10 JUL 2025 to 07 AUG 2025

EC-1, 10 JUL 2025 to 07 AUG 2025