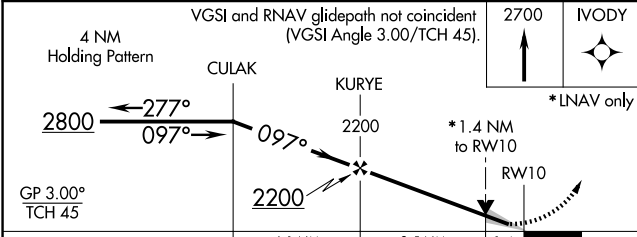
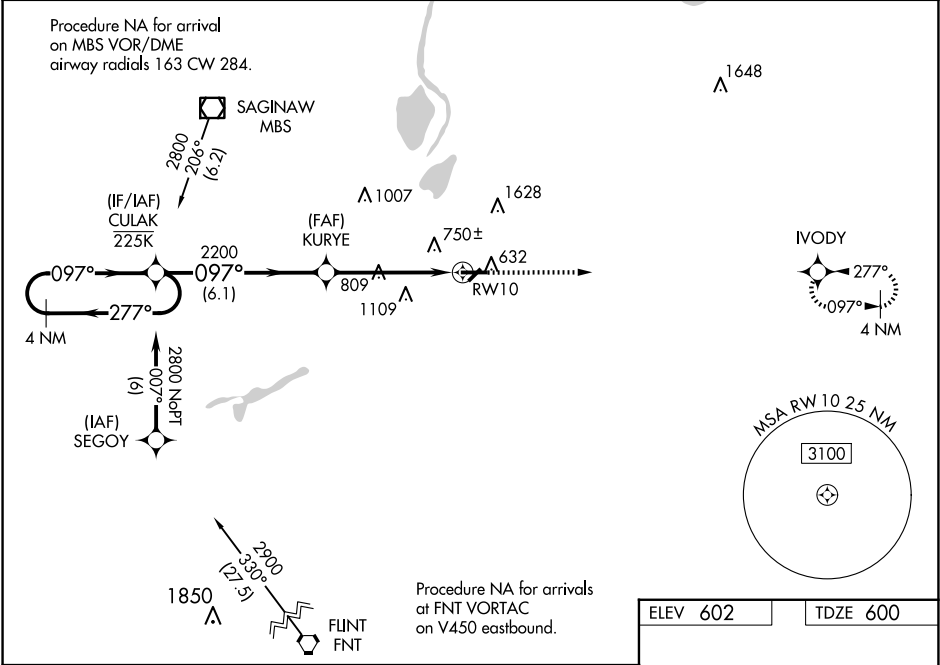


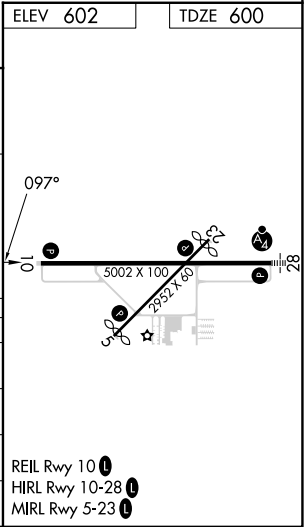
WAAS CH <b>50200</b> <b>W10A</b>	APP CRS <b>097°</b>	Rwy Idg TDZE Apt Elev	<b>5002</b> <b>600</b> <b>602</b>
--	------------------------	-----------------------------	---

RNAV (GPS) RWY 10  
SAGINAW COUNTY/H W BROWNE (HYX)

RNP APCH - GPS.		MISSED APPROACH: Climb to 2700 direct IVODY and hold.
<div><div><div>T</div><div>A</div></div><div>For uncompensated Baro-VNAV systems, LNAV/VNAV NA below -18°C or above 54°C. Circling NA for Cat C north of Rwy 10-28. Circling Rwy 5, 23 NA at night.</div></div>		
AWOS-3PT 118.325	GREAT LAKES APP CON ★ 120.95 235.625	UNICOM 122.8 (CTAF) 0



CATEGORY	A	B	C	D
LPV DA	800-3/4 200 (200-3/4)			NA
LNAV/VNAV DA	1018-13/8 418 (500-13/8)			NA
LNAV MDA	1060-1	460 (500-1)	1060-13/8 460 (500-13/8)	NA
CIRCLING	1100-1	498 (500-1)	1460-21/2 858 (900-21/2)	NA



EC-1, 10 JUL 2025 to 07 AUG 2025

EC-1, 10 JUL 2025 to 07 AUG 2025