

WAAS CH <b>56429</b> <b>W14A</b>	APP CRS <b>135°</b>	Rwy Idg TDZE <b>678</b> Apt Elev <b>678</b>	<b>5006</b>
--	------------------------	---	-------------

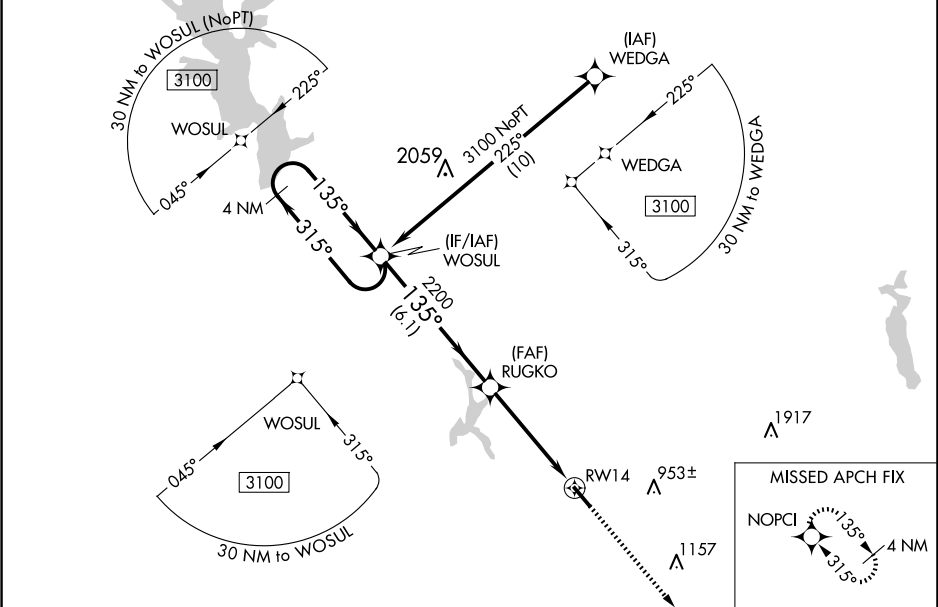
RNAV (GPS) RWY 14

CHEROKEE COUNTY (JSO)

Baro-VNAV NA when using Nacogdoches altimeter setting. For uncompensated Baro-VNAV systems, LNAV/VNAV NA below -16°C (4°F) or above 54°C (130°F). When local altimeter setting not received, use Nacogdoches altimeter setting and increase all DA to 1046 feet and increase LPV visibility ½ SM and LNAV/VNAV visibility ¼ SM; increase all MDA 120 feet and LNAV visibility Cat C ¾ SM, Circling visibility Cat C ¼ SM. DME/DME RNP-0.3 NA. VDP NA with Nacogdoches altimeter setting.

MISSED APPROACH: Climb to 3100 direct NOPCI and hold.

AWOS-3 <b>119.075</b>	LONGVIEW APP CON* <b>128.75 379.15</b>	UNICOM <b>122.7 (CTAF) 0</b>
--------------------------	---	---------------------------------



4 NM Holding Pattern WOSUL		RUGKO 2200		RW14	
3100 ← 315°		→ 135°		→ 135°	
GP 3.00° TCH 30		2200		1.2 NM to RW14	
6.1 NM		3.5 NM		1.2 NM	
CATEGORY	A	B	C	D	
LPV DA	928-1	250 (300-1)		NA	
LNAV/VNAV DA	928-1	250 (300-1)		NA	
LNAV MDA	1080-1	402 (500-1)	1080-1 ½ 402 (500-1 ½)	NA	
CIRCLING	1080-1 402 (500-1)	1140-1 462 (500-1)	1280-1 ¾ 602 (700-1 ¾)	NA	

ELEV 678

TDZE 678

REIL Rwy 14 0

MIRL Rwy 14-32 0