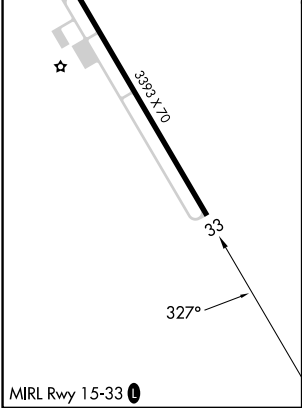
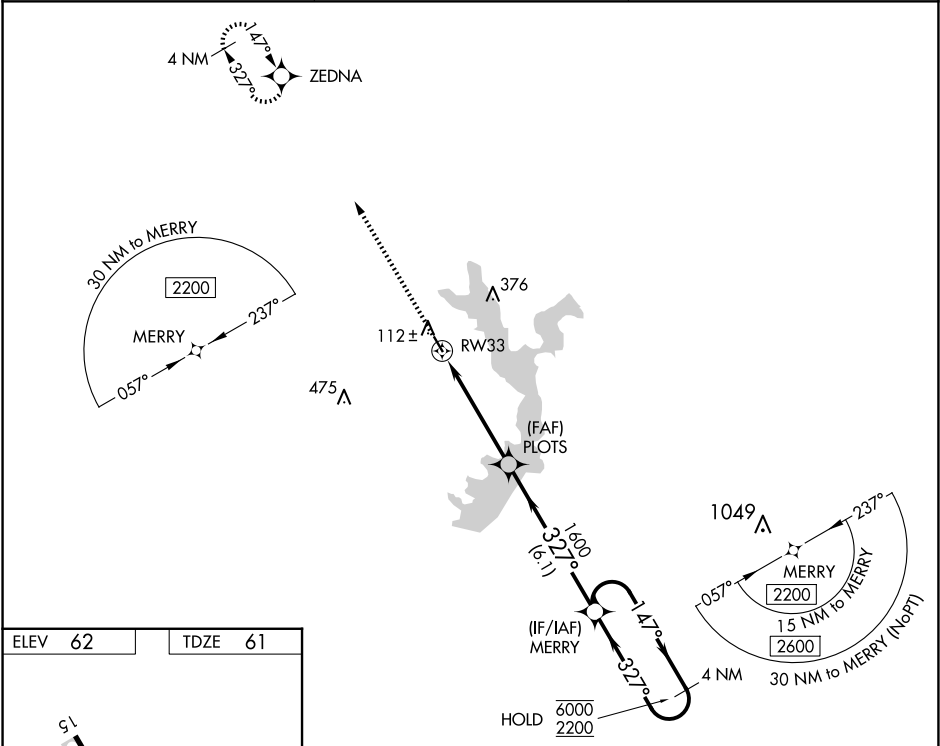


WAAS CH 97348 W33A	APP CRS 327°	Rwy Idg TDZE 61 Apt Elev 62	3393
--	------------------------	---	-------------

RNAV (GPS) RWY 33

JACKSON COUNTY (26R)

RNP APCH - GPS.		MISSED APPROACH: Climb to 2200 direct ZEDNA and hold.
Baro-VNAV NA. Use VCT altimeter setting, when not received, use PKV altimeter setting.		
VCT ASOS 119.025	HOUSTON CENTER 135.05 353.6	UNICOM 122.8 (CTAF) 0



2200 ZEDNA		MERRY 4 NM Holding Pattern	
PLOTS 1600		147° → 6000 ← 327° 2200	
RW33		GP 3.00° TCH 40	
4.7 NM		6.1 NM	
CATEGORY	A	B	C D
LPV DA	315-3/4	254 (300-3/4)	NA
LNAP/VNAV DA	365-7/8	304 (400-7/8)	NA
LNAP MDA	560-1	499 (500-1)	NA

SC-5, 10 JUL 2025 to 07 AUG 2025

SC-5, 10 JUL 2025 to 07 AUG 2025