

HOUSTON, TEXAS

AL-6460 (FAA)

2219.5

WAAS CH 93621 W32A	APP CRS 322°	Rwy Idg 4313 TDZE 43 Apt Elev 44
--	------------------------	---

RNAV (GPS) RWY 32

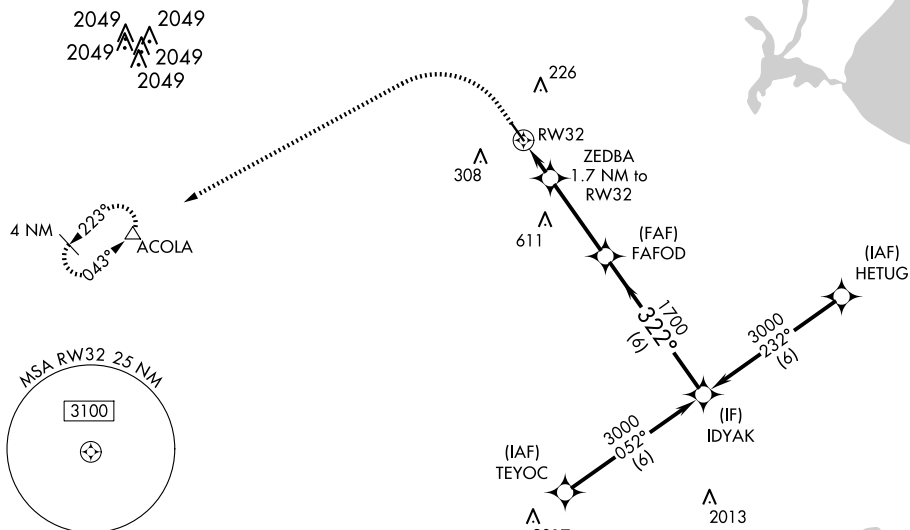
PEARLAND RGNL (LVJ)

T Circling to Rwy 14 NA at night. For uncompensated Baro-VNAV systems, LNAV/VNAV NA below -1°C (31°F) or above 54°C (130°F). When local altimeter setting not received, use William P Hobby altimeter setting and increase all DA 18 feet and all MDA 20 feet, increase LNAV/VNAV visibilities all Cats ½ mile. VDP and Baro-VNAV NA when using William P Hobby altimeter setting. DME/DME RNP-0.3 NA. Helicopter visibility reduction below ¾ SM NA.

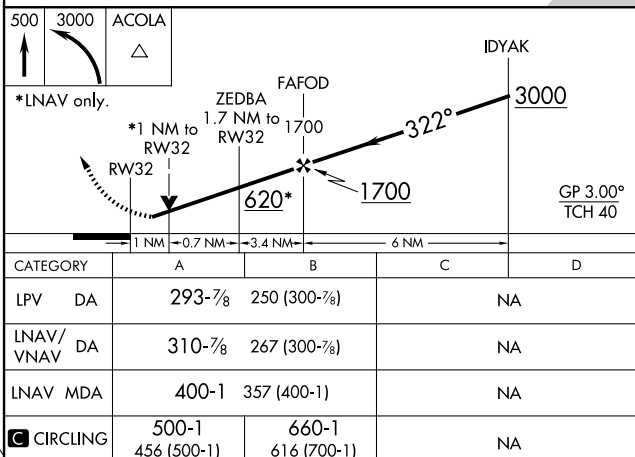
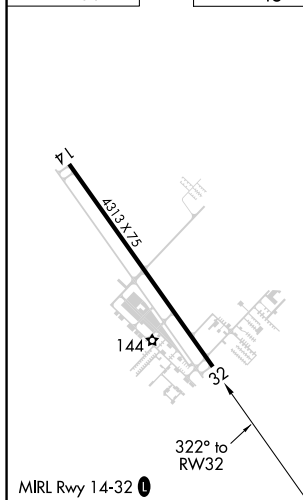
MISSED APPROACH:
Climb to 500 then climbing
left turn to 3000 direct
ACOLA and hold.

ASOS 118.525	HOUSTON APP CON 134.45 284.0	CLNC DEL 124.0	UNICOM 122.725 (CTAF) ①
------------------------	--	--------------------------	-----------------------------------

RADAR REQUIRED



ELEV	44		TDZE	43
------	----	--	------	----



HOUSTON, TEXAS
Amdt 4A 02APR15

29°31'N-95°15'W

PEARLAND RGNI (L.V.J)

RNAV (GPS) RWY 32

SC-5, 10 JUL 2025 to 07 AUG 2025