

MMALT SEVEN DEPARTURE (RNAV)

HOUSTON, TEXAS

SC-5, 10 JUL 2025 to 07 AUG 2025

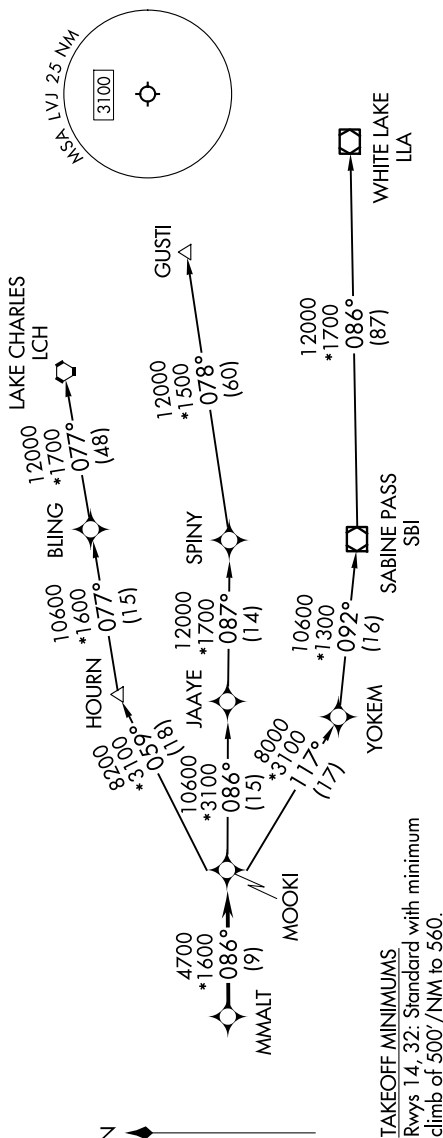
RNAV 1 - DME/DME/IRU or GPS.
RADAR required.

HOUSTON DEP CON
134.45 284.0
ASOS
118.525
CLINC DEL
124.0
CTAF
122.725

MMALT SEVEN DEPARTURE (RNAV)
(MMALT7.MMALT) 30NOV23

30NOV23

HOUSTON, TEXAS
PEARLAND RGNL (LVJ)



NOTE: GUSTI and LCH Transitions ATC assigned only for aircraft departing AXH, EFD, GLS, HPY, IWS, LBX, LVJ, SGR, TME, T00, T41 and 54T.

DEPARTURE ROUTE DESCRIPTION

TAKEOFF RUNWAY 14: Climb on heading 142° to 1600, for RADAR vectors to MMALT, thence. . . .
TAKEOFF RUNWAY 32: Climb on heading 322° to 900, for RADAR vectors to MMALT, thence. . . .

...on track 086° to MOOKI, then on (transition). Maintain ATC assigned altitude. Expect filed altitude 10 minutes after departure.

GUSTI TRANSITION (MMALT7.GUSTI)
LAKE CHARLES TRANSITION (MMALT7.LCH)
WHITE LAKE TRANSITION (MMALT7.LLA)

NOTE: Chart not to scale.