

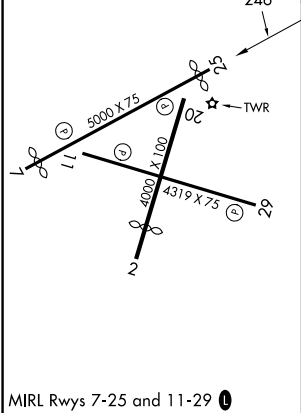
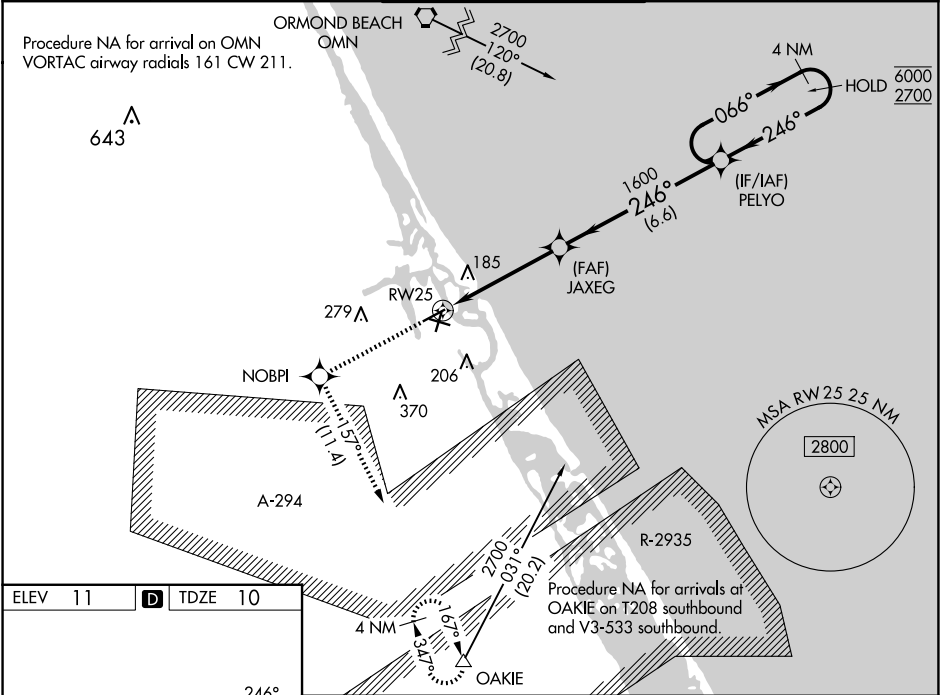
WAAS CH <b>50500</b> <b>W25A</b>	APP CRS <b>246°</b>	Rwy Ldg <b>4463</b> TDZE <b>10</b> Apt Elev <b>11</b>
--	------------------------	---

RNAV (GPS) RWY 25

NEW SMYRNA BEACH MUNI (JACK BOLT FLD) (EVB)

RNP APCH-GPS.	MISSED APPROACH: Climb to 4000 direct NOBPI and on track 1.57° to OAKIE and hold, continue climb-in-hold to 4000.
Rwy 25 helicopter visibility reduction below 1 SM NA. Straight-in Rwy 25 NA at night, Circling Rwy 7, 11, 25 NA at night. When local altimeter setting not received, use Daytona Beach altimeter setting increase LPV DA to 328 feet and all MDA 40 feet. Increase LNAV Cat C visibility ½ SM and Circling Cat C visibility ¼ SM.	

ATIS <b>124.625</b>	DAYTONA APP CON <b>125.35 322.3</b>	NEW SMYRNA BEACH TOWER★ <b>119.675 (CTAF) 0</b>	GND CON <b>121.325</b>	UNICOM <b>122.95</b>
------------------------	--	--	---------------------------	-------------------------



4000	NOBPI	tr 1.57°	OAKIE	VGSI and RNAV glidepath not coincident (VGSI Angle 3.00/TCH 46).	4 NM Holding Pattern
↑	✧		△		
			JAXEG 1600	246°	066° → 6000 ← 246° 2700
RW25			1600		GP 3.00° TCH 60
	4.7 NM	6.6 NM			
CATEGORY	A	B	C	D	
LPV DA	303-1	293 (300-1)		NA	
LNAV MDA	440-1	430 (500-1)	440-1¼ 430 (500-1¼)	NA	
CIRCLING	440-1 429 (500-1)	520-1 509 (600-1)	680-1¾ 669 (700-1¾)	NA	