

MILFORD, IOWA

AL-6455 (FAA)

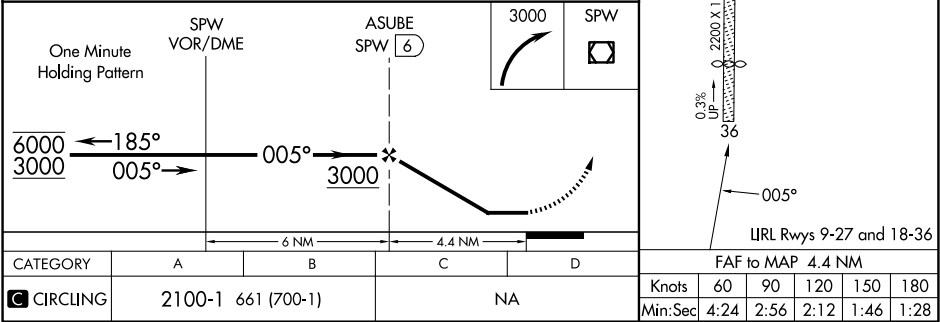
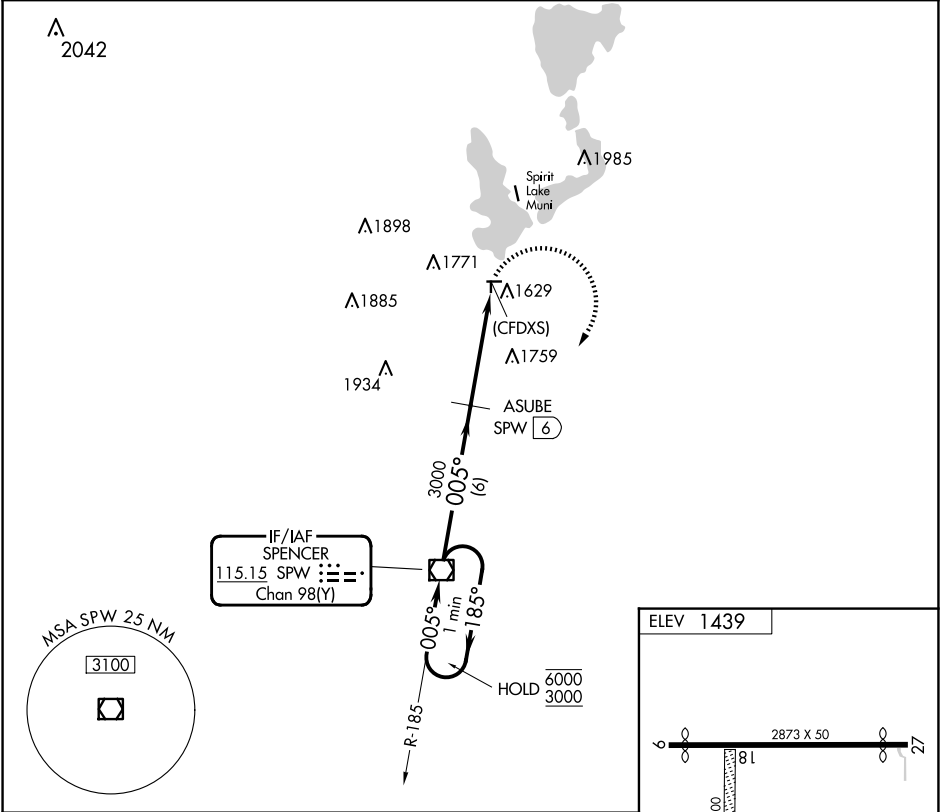
23278

VOR/DME SPW 115.15 Chan 98 (Y)	APP CRS 005°	Rwy Idg TDZE Apt Elev N/A 1439
--	------------------------	--

VOR-A
FULLER(4D8)

DME required. RADAR required for procedure entry.	MISSED APPROACH: Climbing right turn to 3000 direct SPW VOR/DME and hold.
<div><div></div><div>NA</div></div> <div>Circling NA to Rwys 18 and 36. Procedure NA at night. Use Spencer altimeter setting, when not received, use Estherville altimeter setting and increase all MDA 40 feet.</div>	

SPW ASOS 126.625	MINNEAPOLIS CENTER 127.75 257.7	CTAF 122.9
----------------------------	---	----------------------



MILFORD, IOWA

43°20'N-95°10'W

FULLER(4D8)

Amtd 1 03JAN19

VOR-A

NC-3, 10 JUL 2025 to 07 AUG 2025

NC-3, 10 JUL 2025 to 07 AUG 2025