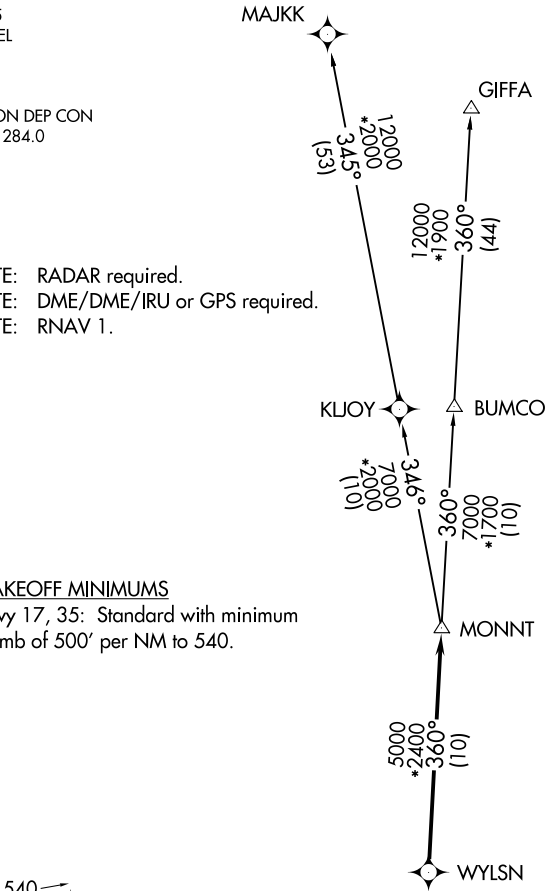


ASOS
119.925
CLNC DEL
125.2
CTAF
123.0
HOUSTON DEP CON
134.45 284.0

TOP ALTITUDE:
ASSIGNED BY ATC

NOTE: RADAR required.
NOTE: DME/DME/IRU or GPS required.
NOTE: RNAV 1.

TAKEOFF MINIMUMS
Rwy 17, 35: Standard with minimum
climb of 500' per NM to 540.



DEPARTURE ROUTE DESCRIPTION

TAKEOFF RUNWAY 17: Climb on heading 175° to 540 for
RADAR vectors to WYLSN, thence. . . .
TAKEOFF RUNWAY 35: Climb on heading 355° to 540 for
RADAR vectors to WYLSN, thence. . . .
...on track 360° to MONNT, then on (transition). Maintain ATC
assigned altitude. Expect filed altitude 10 minutes after departure.
GIFFA TRANSITION (WYLSN8.GIFFA)
MAJJK TRANSITION (WYLSN8.MAJKK)

NOTE: Chart not to scale.

SC-5, 10 JUL 2025 to 07 AUG 2025

SC-5, 10 JUL 2025 to 07 AUG 2025