

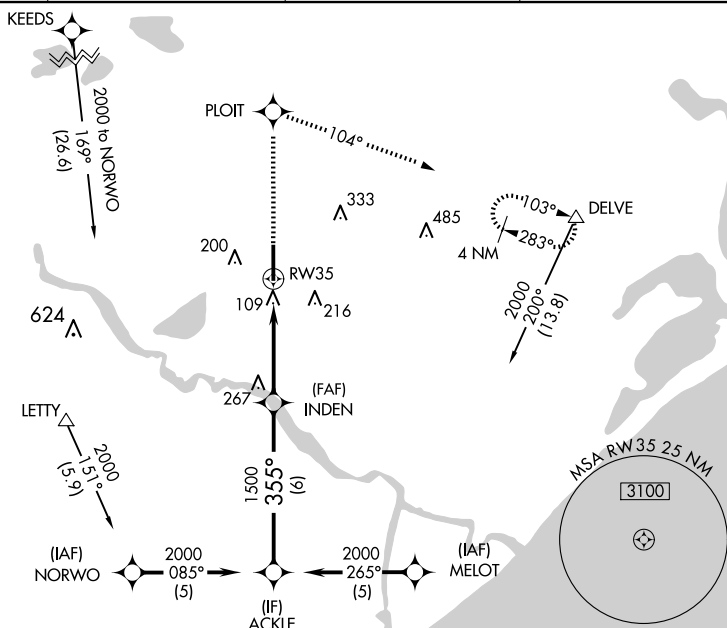
WAAS CH 77516 W35A	APP CRS 355°	Rwy Idg 7000 TDZE 25 Apt Elev 25
--	------------------------	---

RNAV (GPS) RWY 35
TEXAS GULF COAST RGNL (LBX)

T DME/DME RNP-0.3 NA. Baro-VNAV NA below -16°C (4°F). When local altimeter setting not received, use William P. Hobby altimeter setting and increase all DAs/MDAs 100 feet and Circling Cat D visibility $\frac{1}{4}$ SM. Baro-VNAV and VDP NA when using William P. Hobby altimeter setting. Circling NA east of Rwy 17-35.

MISSED APPROACH: Climb to 2000
direct PLOIT and right turn via 104°
track to DELVE and hold.

ASOS 119.925	HOUSTON APP CON 134.45 284.0	CLNC DEL 125.2	UNICOM 123.0 (CTAF) 0
------------------------	--	--------------------------	---------------------------------



ELEV 25	D	TDZE 25
---------	----------	---------

