

WAAS  
CH **70316**  
**W17A**

APP CRS  
**175°**

Rwy Idg  
TDZE **25**  
Apt Elev **25**

**7000**

**RNAV (GPS) RWY 17**

TEXAS GULF COAST RGNL (L.B.X)

RNP APCH - GPS.  

Circling NA east of Rwy 17-35. Baro-VNAV and VDP NA when using William P. Hobby altimeter setting. For uncompensated Baro-VNAV systems, LNAV/VNAV NA below -16°C or above 54°C. When local altimeter setting not received, use William P. Hobby altimeter setting and increase LPV DA to 363 feet; increase LNAV/VNAV DA to 441 feet and all visibilities ¼ SM; increase all MDAs 100 feet and LNAV visibility Cat C/D ⅓ SM, and Circling visibility Cat D ¼ SM.

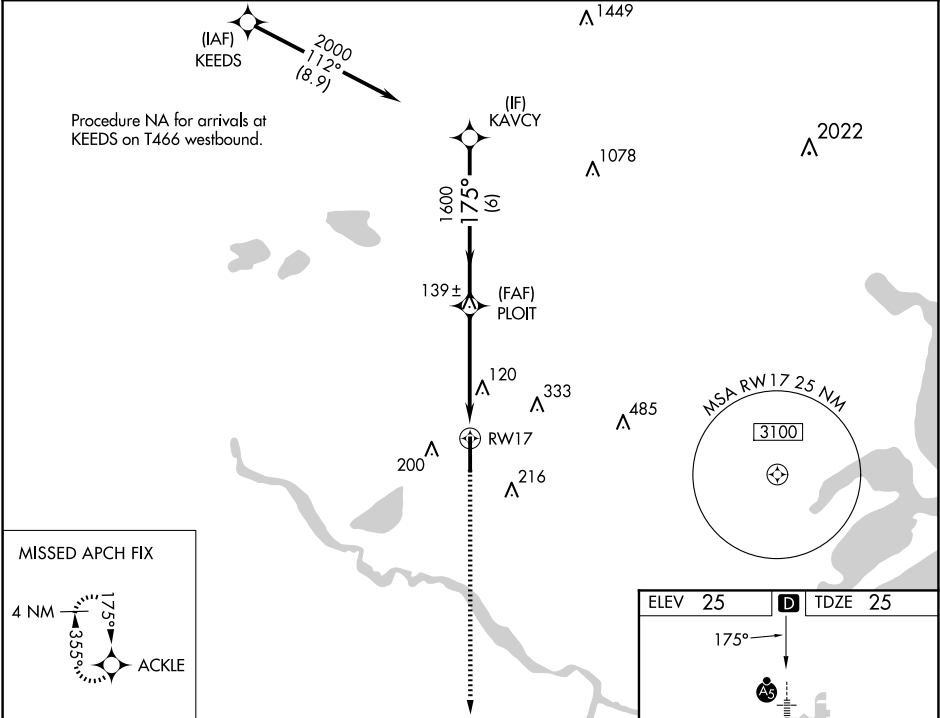
MALSR

MISSED APPROACH:

Climb to 2000 direct

ACKLE and hold.

ASOS <b>119.925</b>	HOUSTON APP CON <b>134.45 284.0</b>	CINC DEL <b>125.2</b>	UNICOM <b>123.0 (CTAF)</b> 
------------------------	--	--------------------------	---



GP 3.00°

TCH 50

2000

175°

1600

1.1 NM to RW17

RW17


6 NM

3.6 NM

1.1

2000

ACKLE

CATEGORY	A	B	C	D
LPV DA	282-½	257 (300-½)		
LNAV/VNAV DA	360-½	335 (400-½)		
LNAV MDA	420-½	395 (400-½)	420-⅝	395 (400-⅝)
 CIRCLING	480-1 455 (500-1)	500-1 475 (500-1)	500-1½ 475 (500-1½)	620-2 595 (600-2)

MIRL Rwy 17-35

