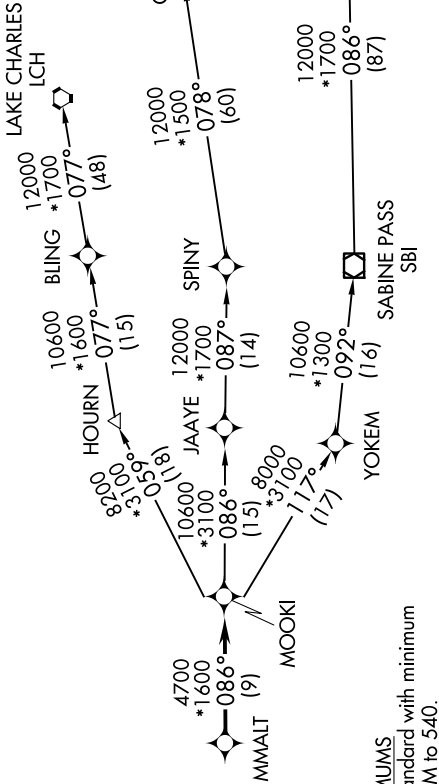
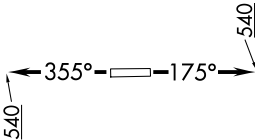


HOUSTON DEP CON
134.45 284.0
ASOS
119.925
CUNIC DEL
125.2
CTAF
123.0

RNAV 1 - DME/DME/IRU or GPS.
RADAR required.



TAKEOFF MINIMUMS
Rwys 17, 35: Standard with minimum
climb of 500' /NM to 540'.



TOP ALTITUDE:
ASSIGNED BY ATC

NOTE: GUSTI and LCH Transitions ATC assigned only for aircraft departing
AXH, EFD, GLS, HPY, IWS, LBX, LVJ, SGR, TME, T00, T41 and 54T.

DEPARTURE ROUTE DESCRIPTION

TAKEOFF RUNWAY 17: Climb on heading 175° to 540, for RADAR vectors to MMALT, thence. . .
TAKEOFF RUNWAY 35: Climb on heading 355° to 540, for RADAR vectors to MMALT, thence. . .
... on track 086° to MOOKI, then on (transition). Maintain ATC assigned altitude.
Expect filed altitude 10 minutes after departure.

GUSTI TRANSITION (MMALT7.GUSTI)
LAKE CHARLES TRANSITION (MMALT7.LCH)
WHITE LAKE TRANSITION (MMALT7.LLA)

NOTE: Chart not to scale.