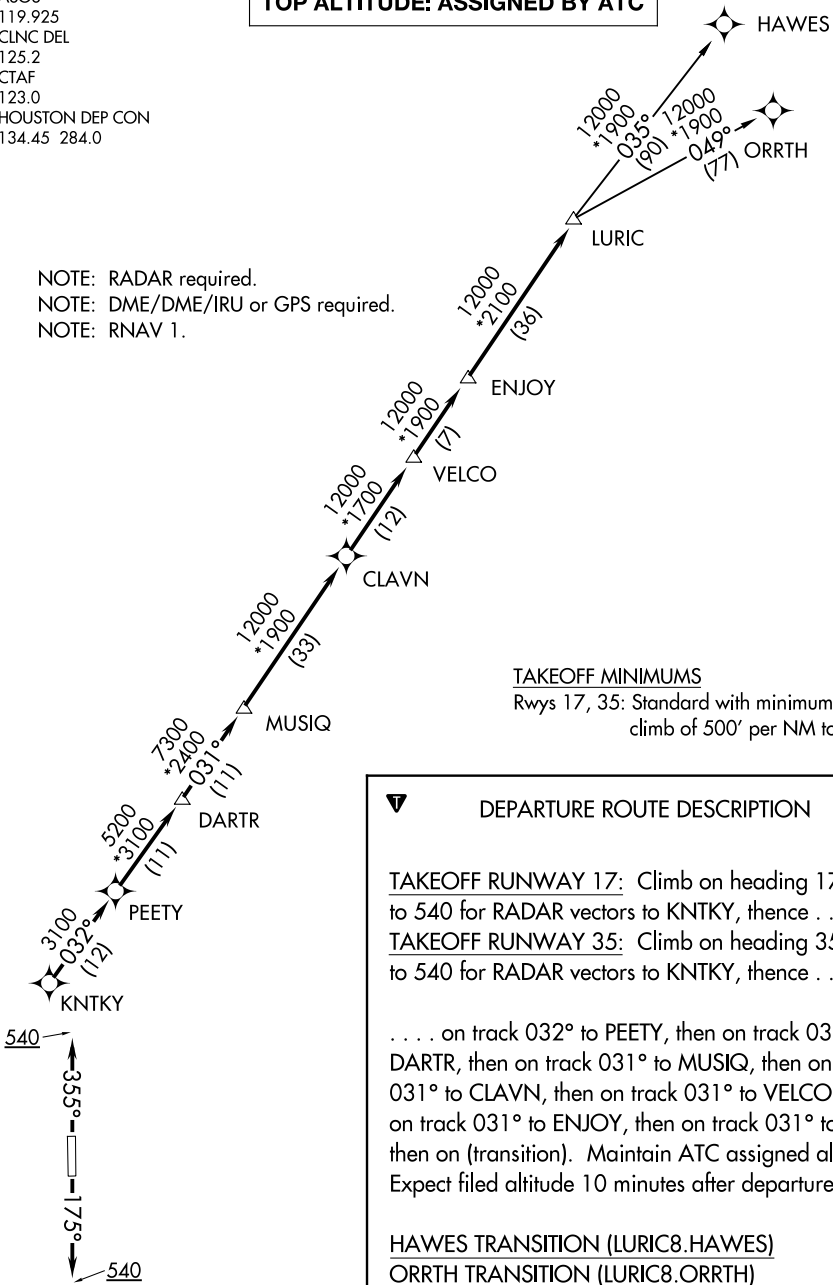


ASOS
119.925
CLNC DEL
125.2
CTAF
123.0
HOUSTON DEP CON
134.45 284.0

TOP ALTITUDE: ASSIGNED BY ATC

NOTE: RADAR required.
NOTE: DME/DME/IRU or GPS required.
NOTE: RNAV 1.



TAKEOFF MINIMUMS
Rwys 17, 35: Standard with minimum
climb of 500' per NM to 540.

DEPARTURE ROUTE DESCRIPTION

TAKEOFF RUNWAY 17: Climb on heading 175° to 540 for RADAR vectors to KNTKY, thence . . .

TAKEOFF RUNWAY 35: Climb on heading 355° to 540 for RADAR vectors to KNTKY, thence . . .

. . . on track 032° to PEETY, then on track 032° to DARTR, then on track 031° to MUSIQ, then on track 031° to CLAVN, then on track 031° to VELCO, then on track 031° to ENJOY, then on track 031° to LURIC, then on (transition). Maintain ATC assigned altitude. Expect filed altitude 10 minutes after departure.

HAWES TRANSITION (LURIC8.HAWES)

ORRTH TRANSITION (LURIC8.ORRTH)

NOTE: Chart not to scale.