

(INDIE8.INDIE) 21280

AL-6453 (FAA)

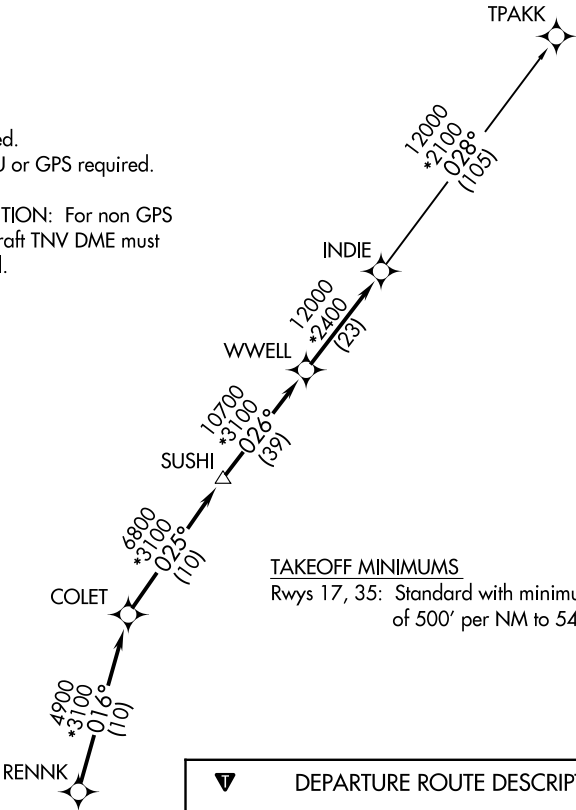
TEXAS GULF COAST RGNL (LBX)  
ANGLETON/LAKE JACKSON, TEXAS

INDIE EIGHT DEPARTURE (RNAV)

ASOS  
119.925  
CLNC DEL  
125.2  
CTAF  
123.0  
HOUSTON DEP CON  
134.45 284.0

TOP ALTITUDE:  
ASSIGNED BY ATC

NOTE: RADAR required.  
NOTE: DME/DME/IRU or GPS required.  
NOTE: RNAV 1.  
NOTE: TPAKK TRANSITION: For non GPS  
equipped aircraft TNV DME must  
be operational.



TAKEOFF MINIMUMS  
Rwys 17, 35: Standard with minimum climb  
of 500' per NM to 540.

DEPARTURE ROUTE DESCRIPTION

TAKEOFF RUNWAY 17: Climb on heading 175°  
to 540 for RADAR vectors to RENNK, thence . . .  
TAKEOFF RUNWAY 35: Climb on heading 355°  
to 540 for RADAR vectors to RENNK, thence . . .  
... on track 016° to COLET, then on track 025°  
to SUSHI, then on track 026° to WWELL, then on  
track 026° to INDIE, then on (transition).  
Maintain ATC assigned altitude. Expect filed  
altitude 10 minutes after departure.

TPAKK TRANSITION (INDIE8.TPAKK)

NOTE: Chart not to scale.

INDIE EIGHT DEPARTURE (RNAV)  
(INDIE8.INDIE) 07OCT21

ANGLETON/LAKE JACKSON, TEXAS  
TEXAS GULF COAST RGNL (LBX)

SC-5, 10 JUL 2025 to 07 AUG 2025

SC-5, 10 JUL 2025 to 07 AUG 2025