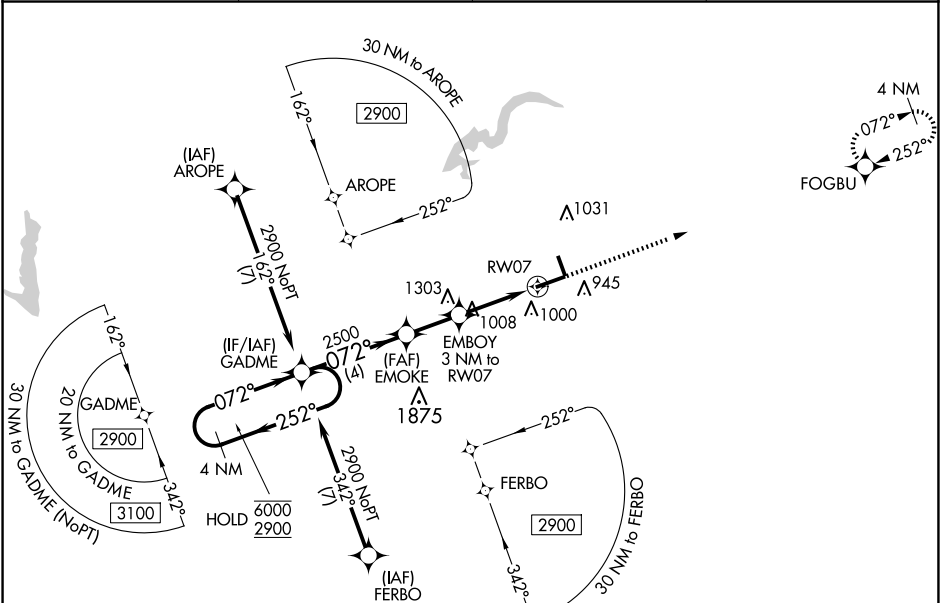


WAAS CH 69646 W07A	APP CRS 072°	Rwy Idg TDZE Apt Elev	6005 862 862
--	------------------------	-----------------------------	---

RNAV (GPS) RWY 7

INDIANAPOLIS RGNL (MQJ)

RNP APCH - GPS.		MISSED APPROACH: Climb to 2700 direct FOGBU and hold.	
For uncompensated Baro-VNAV systems, LNAV/VNAV NA below -16°C or above 54°C. Rwy 7 helicopter visibility reduction below ¾ SM NA. Baro-VNAV and VDP NA when using IND altimeter setting. When local altimeter setting not received, use IND altimeter setting and increase LPV DA to 1271 feet and all visibilities ½ SM; increase LNAV/VNAV DA to 1194 feet and all visibilities ½ SM; increase all MDAs 60 feet and LNAV visibility Cat C and D ¼ SM.			
AWOS-3PT 124.175	INDIANAPOLIS APP CON 127.15 317.8	CINC DEL 119.25	UNICOM 122.975 (CTAF) 0



ELEV 862		TDZE 862	
4 NM Holding Pattern		2700 FOGBU	
6000 ← 252°		2900 → 072°	
GP 3.00° TCH 40		2500 1840	
4 NM		2 NM	
2 NM		1.9 NM	
1.1 NM		1.1 NM	
CATEGORY	A	B	C
LPV DA	1216-1		354 (400-1)
LNAV/VNAV DA	1139-7/8		277 (300-7/8)
LNAV MDA	1260-1	398 (400-1)	1260-1 3/8 398 (400-1 1/8)

