

WAAS CH 65813 W16A	APP CRS 155°	Rwy Ldg TDZE 3174 Apt Elev 3174
--	------------------------	---

RNAV (GPS) RWY 16

ANDREWS COUNTY (E11)

RNP APCH-GPS.

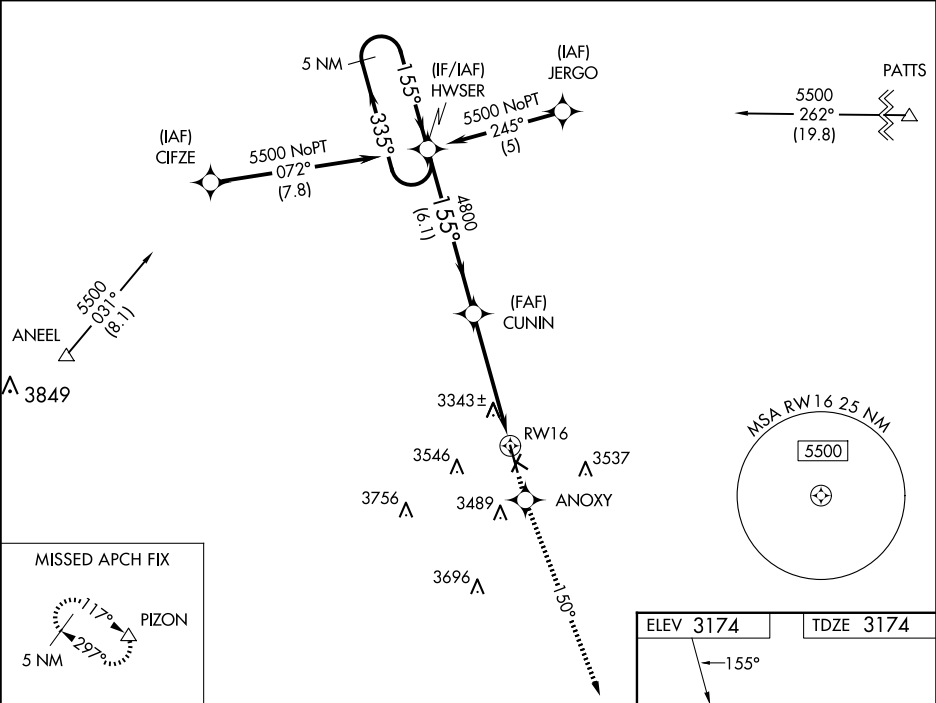
▼

⚠

Circling NA west of Rwy 16/34. Rwy 16 helicopter visibility reduction below $\frac{3}{4}$ SM NA.
When local altimeter setting not received, use Midland altimeter setting. For uncompensated Baro-VNAV systems, LNAV/VNAV NA below -21°C or above 54°C. Circling Rwy 2, 11, 20, 29, 34 NA at night. VDP NA when using Midland altimeter setting.

MISSED APPROACH: Climb to 5000 direct ANOXY and via track 150° to PIZON and hold.

AWOS - 3 118.2	MIDLAND APP CON ★ 124.6 290.4	UNICOM 122.8 (CTAF) 0
--------------------------	---	---------------------------------



MISSED APCH FIX

VGSI and RNAV glidepath not coincident (VGSI Angle 3.00/TCH 37).				
5 NM Holding Pattern HWSER				
5000 ← 335° 155° →				
GP 3.00° TCH 45				
CUNIN 4800				
1.7 NM to RWY 16				
6.1 NM 3.2 NM 1.7 NM				
CATEGORY	A	B	C	D
LPV DA	3533-1¼	359 (400-1¼)		NA
LNAV/VNAV DA	3802-2¼	628 (700-2¼)		NA
LNAV MDA	3780-1	606 (700-1)	3780-1¾ 606 (700-1¾)	NA
CIRCLING	3780-1	606 (700-1)	4000-2½ 826 (900-2½)	NA

