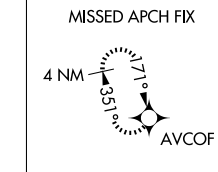


25107

RNAV (GPS) RWY 35
MARCO ISLAND EXEC (MKY)

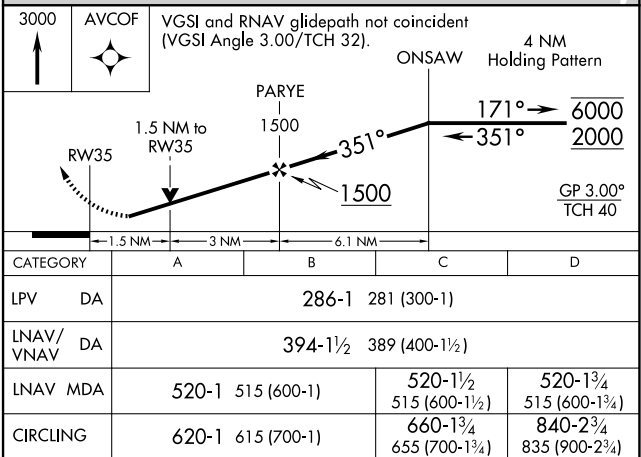
▼ Baro-VNAV and VDP NA when using APF altimeter setting. Rwy 35 helicopter visibility reduction below $\frac{3}{4}$ SM NA. For uncompensated Baro-VNAV systems, LNAV/VNAV NA below 2°C or above 54°C. When local altimeter setting not received, use APF altimeter setting and increase LPV DA to 312 feet; increase LNAV/VNAV DA to 420 feet, increase all MDAs 40 feet and Circling visibility Cat C $\frac{1}{4}$ SM.

MISSED APPROACH: Climb to 3000 direct AVCOF and hold, continue climb-in-hold to 3000.

UNICOM
122.7 (CTAF) **L**

REIL Rwys 17 and 35 **L**

MIRL Rwy 17-35 **L**



MARCO ISLAND EXEC (MKY)
RNAV (GPS) RWY 35

SE-3, 10 JUL 2025 to 07 AUG 2025