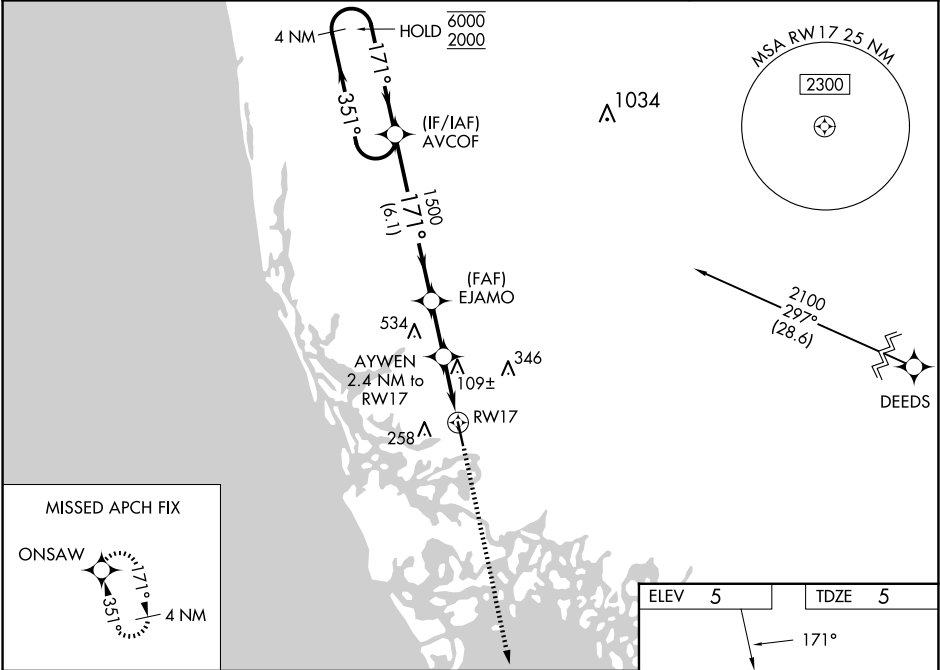


WAAS CH 93516 W17A	APP CRS 171°	Rwy Idg 5000 TDZE 5 Apt Elev 5
--	------------------------	---

RNAV (GPS) RWY 17
MARCO ISLAND EXEC (MKY)

RNP APCH-GPS. <div><div></div><div>Baro-VNAV and VDP NA when using APF altimeter setting. Rwy 17 helicopter visibility reduction below ¾ SM NA. For uncompensated Baro-VNAV systems, LNAV/VNAV NA below 2°C or above 54°C. When local altimeter setting not received, use APF altimeter setting and increase LPV DA to 326 feet; increase LNAV/VNAV DA to 484 feet; increase all MDAs 40 feet and visibility Cat C ¼ SM.</div></div>			MISSED APPROACH: Climb to 2000 direct ONSAW and hold.
AWOS-3PT 120.075	FORT MYERS APP CON ★ 124.125 371.85	CLNC DEL 120.8	UNICOM 122.7 (CTAF) 0



4 NM Holding Pattern		VGSI and RNAV glidepath not coincident (VGSI Angle 3.00/TCH 31).		2000	ONSAW
6000 2000		AVCOF	EJAMO	AYWEN 2.4 NM to RW17	
GP 3.00° TCH 60		1500	1500	1.7 NM to RW17	
6.1 NM		2.1 NM	0.8	1.7 NM	
CATEGORY	A	B	C	D	
LPV DA	300-1		295 (300-1)		
LNAV/VNAV DA	458-1½		453 (500-1½)		
LNAV MDA	560-1	555 (600-1)	560-1½ 555 (600-1½)	560-1¾ 555 (600-1¾)	
CIRCLING	620-1	615 (700-1)	660-1¾ 655 (700-1¾)	840-2¾ 835 (900-2¾)	

