

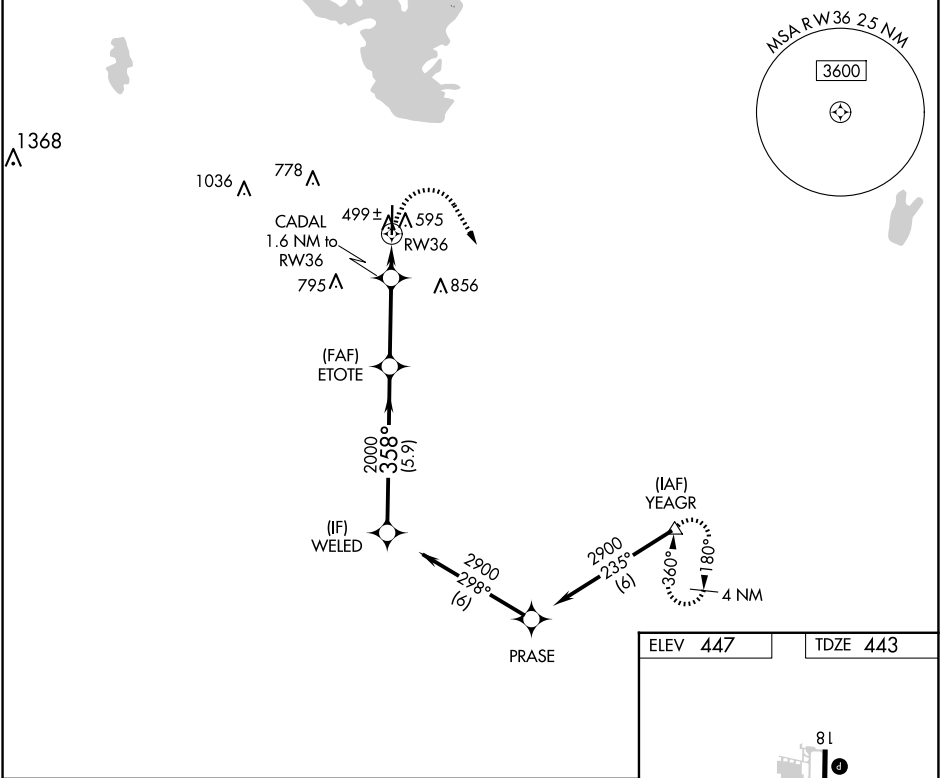
WAAS CH <b>78401</b> <b>W36A</b>	APP CRS <b>358°</b>	Rwy Idg <b>6000</b> TDZE <b>443</b> Apt Elev <b>447</b>
--	------------------------	---

RNAV (GPS) RWY 36  
MESQUITE METRO (HQZ)

**⚠** DME/DME RNP-0.3 NA. When local altimeter setting not received, use Dallas Love Fld altimeter setting and increase all DA/MDA 60 feet. Increase LPV all Cats visibility to 1 mile, increase Circling Cat C visibility to 2¼ mile. VDP NA when using Dallas Love Fld altimeter setting.

**MISSED APPROACH:**  
Climbing right turn to 3000 direct YEAGR and hold.

AWOS-3 <b>118.175</b>	LONE STAR APP CON <b>125.2 343.65</b>	MESQUITE TOWER★ <b>120.3 (CTAF) 0</b>	GND CON <b>118.85</b>	UNICOM <b>123.05</b>
--------------------------	--	--	--------------------------	-------------------------



WELED		ETOTE		CADAL 1.6 NM to RW36	3000 YEAGR
2900		2000		*980	*LNAV only.
GP 3.00° TCH 42				*0.9 NM to RW36	
5.9 NM		3.2 NM		0.7 NM	0.9 NM
CATEGORY	A	B	C	D	
LPV DA	693-7/8	250 (300-7/8)			NA
LNAV MDA	760-1	317 (400-1)			NA
CIRCLING	960-1	513 (600-1)	1160-2 713 (800-2)		NA

